



● Thank you for purchasing the our product. Before installing, please read the instruction carefully and keep it for future re ference.

⚠ NOTICE

- To install, follow the steps as described in the manual. Any damages caused by not following directions voids warranty.
- Correct tools must be used for installation.
- Do not modify any parts unless specifically stated in the instruction manual.
- Interior controller maintenance should be performed by a professional only.

⦿ SYMBOL NOTE:

NOTE Read this information carefully regarding the essential features.

⚠ Some procedures must be followed to avoid damages to the instrument.

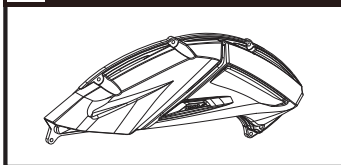
⚠ **CAUTION!** Some processes must be followed to avoid the damage to the vehicle.

🔧 To smear grease before installation.

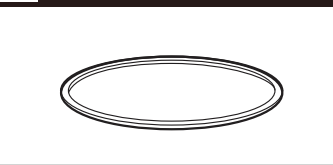
🔩 Denotes the tightening torque value.

1 ACCESSORY

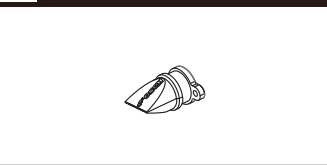
1 AIR CLEANER CASE x1



2 SEAL RING X1



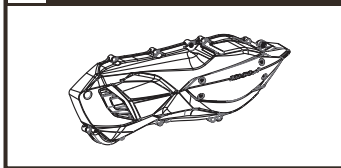
3 DRAIN VALVE X1



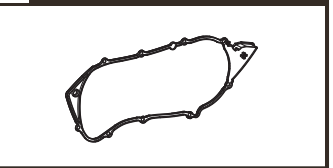
NOTE Please contact your local distributor if the items received are not the same as the one listed above.

1-2 OPTIONAL ACCESSORIES

1 TRANSMISSION COVER



2 TRANSMISSION COVER RUBBER RING



NOTE Some of these items may not sell in particular area, for more information, please contact with our local dealer.

Figure 1

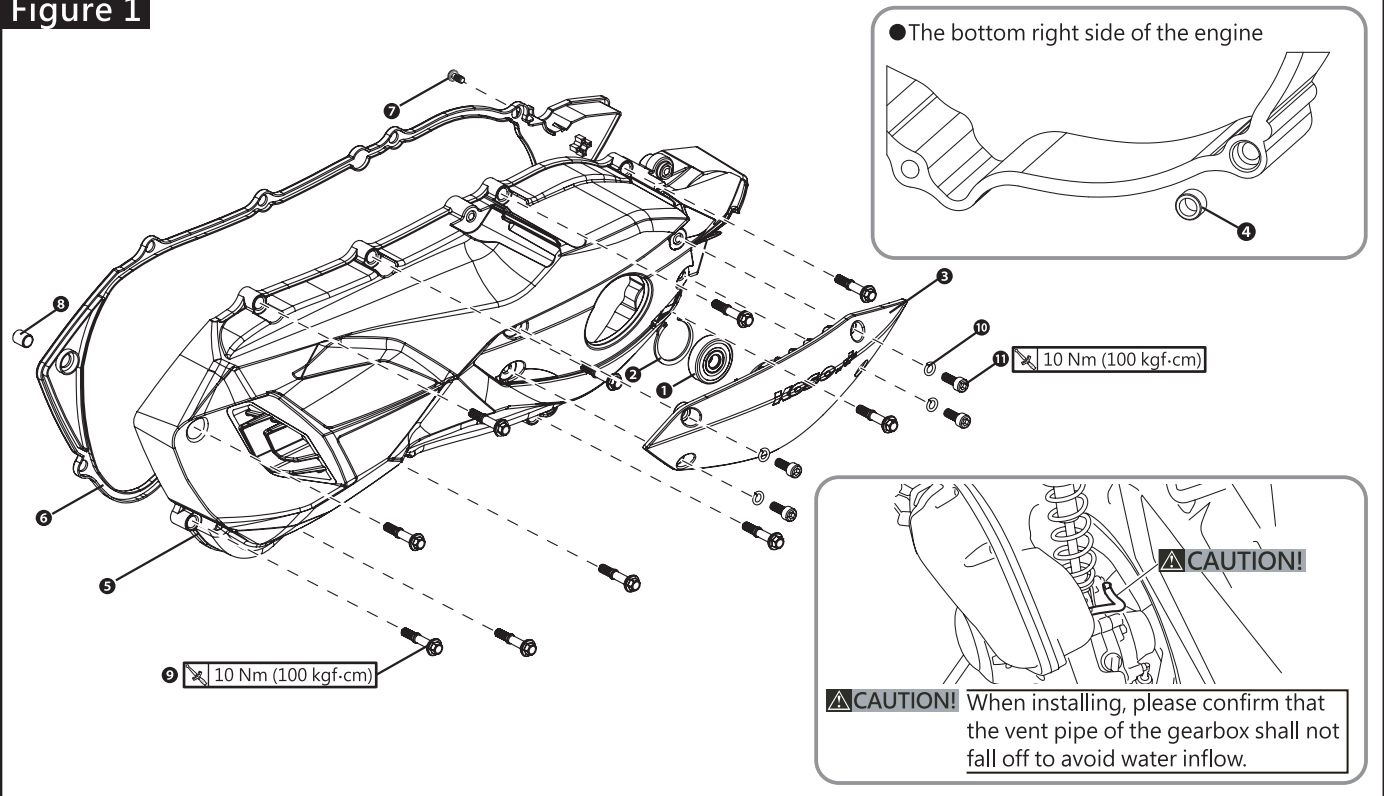
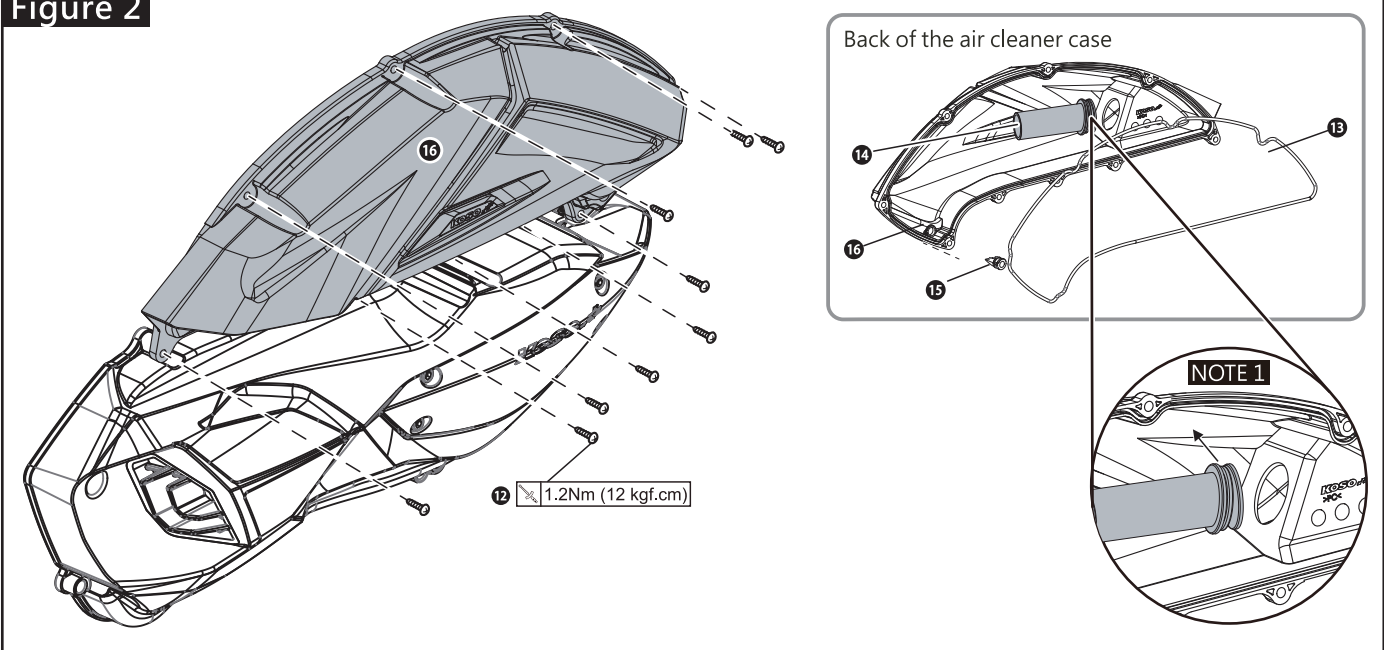


Figure 2



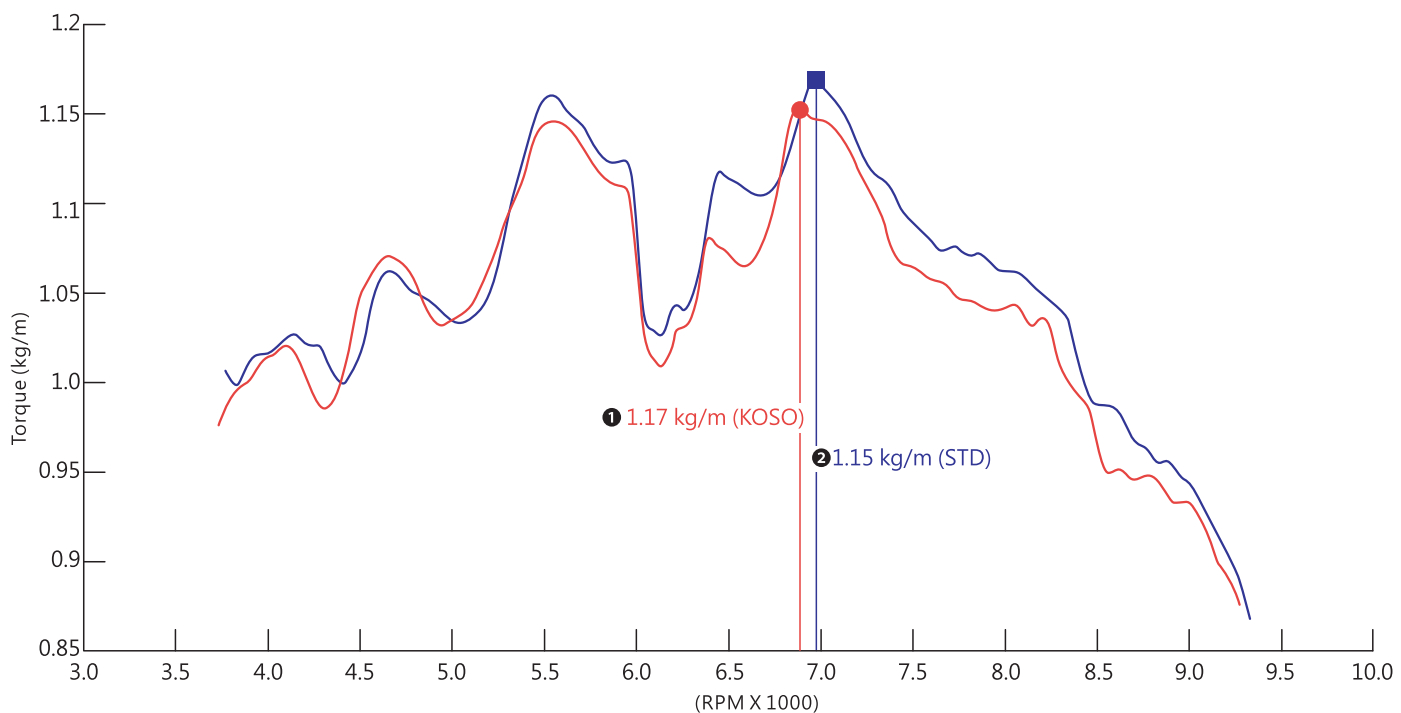
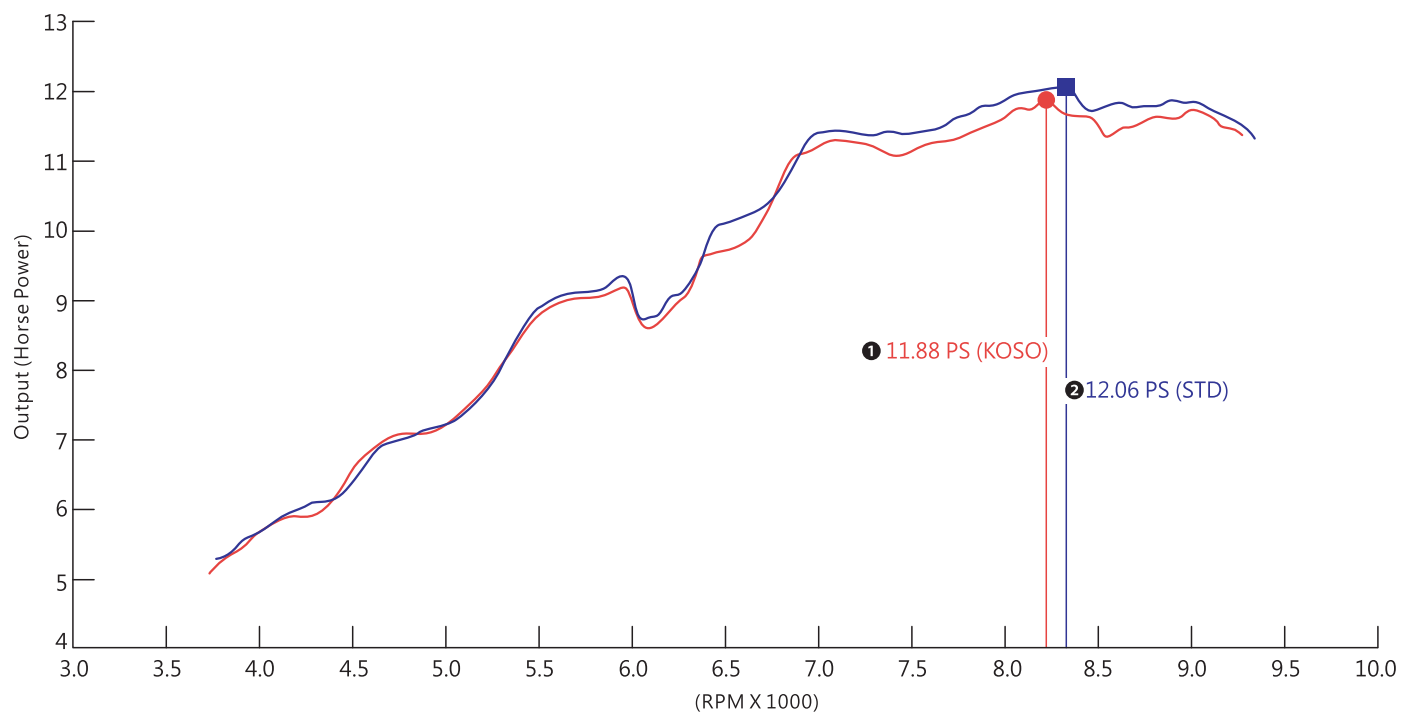
INSTALLATION INSTRUCTIONS

1. Please use appropriate tools to remove the original transmission cover set, ① original bearing, and ② original C ring.
2. Install the ① original bearing and ② original C ring on the ③ KOSO transmission cover bearing support.
3. Install the ④ screw casing into the recessed hole at the bottom right side of the engine.
4. Install the ⑤ KOSO transmission cover (Optional accessories 1), original gasket or ⑥ KOSO transmission cover gasket, ⑦ screw for the rubber gasket of the transmission cover, and ⑧ original locating pin on the car and use appropriate tools to affix the ⑨ fix-pitch screw x10 to the KOSO transmission cover.
5. Please use appropriate tools to install the ⑩ spring washers x4, ⑪ M6x16mm screws x4, and ⑫ KOSO transmission cover bearing support on the ⑤ KOSO transmission cover.
6. Please use appropriate tools to use the fixing screw (with a torque value of 10Nm (100 kgf. cm)) to fix the air filter.
7. Please use appropriate tools to remove the ⑬ original screws of the air cleaner case X9 and the original air cleaner case.
8. Install the ⑭ sealing ring (Accessory 2), the ⑮ original tube, and the ⑯ drain valve (Accessory 3) on the ⑰ KOSO air cleaner case (Accessory 1).
9. Please use appropriate tools to install the ⑰ KOSO air cleaner case (Accessory 1) on the air cleaner case body.

NOTE 1 It is recommended to install the flange mark toward the arrow's direction.

NOTE 2 Please do according to figure in order. Make sure to disassemble the parts in opposite order.
Please refer to the illustration for installation sequence

3 CURVE TEST DIAGRAM



NOTE ① KOSO YAMAHA CYGNUS GRYPHUS AIR CLEANER COVER.

NOTE ② YAMAHA CYGNUS GRYPHUS AIR CLEANER COVER.