



● Thank you for purchasing The Product. Before installation, please read the instruction carefully. We recommend that you store the instruction sheet in a safe place for future reference.

## ⚠ NOTICE

- To install, follow the steps as described in the manual. Any damages caused by not following directions voids warranty.
- Correct tools must be used for installation.
- Do not modify any parts unless specifically stated in the instruction manual.
- Interior controller maintenance should be performed by a professional only.

## ⦿ EXPLANATION OF SYMBOLS

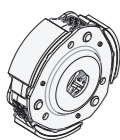
**NOTE** Read this information carefully regarding the essential features.

⚠ Some processes must follow to avoid the affection caused by wrong installation.

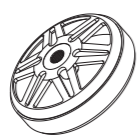
**⚠ CAUTION!** Some processes must follows to avoid the damage to yourself or public.

## 1-1 ACCESSORIES

### 1 SPORT CLUTCH X1



### 2 CLUTCH OUTER X1



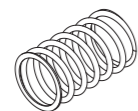
**NOTE** Please contact your local distributor if the items received are not the same as the one listed above.

## 1-2 OPTIONAL ACCESSORIES

### 1 CIUTCH SPRING



### 2 SPRING



### 3 SECONDARY SLIDING SHEAVE



**NOTE** Some of these items may not sell in particular area, for more information, please contact with our local dealer.

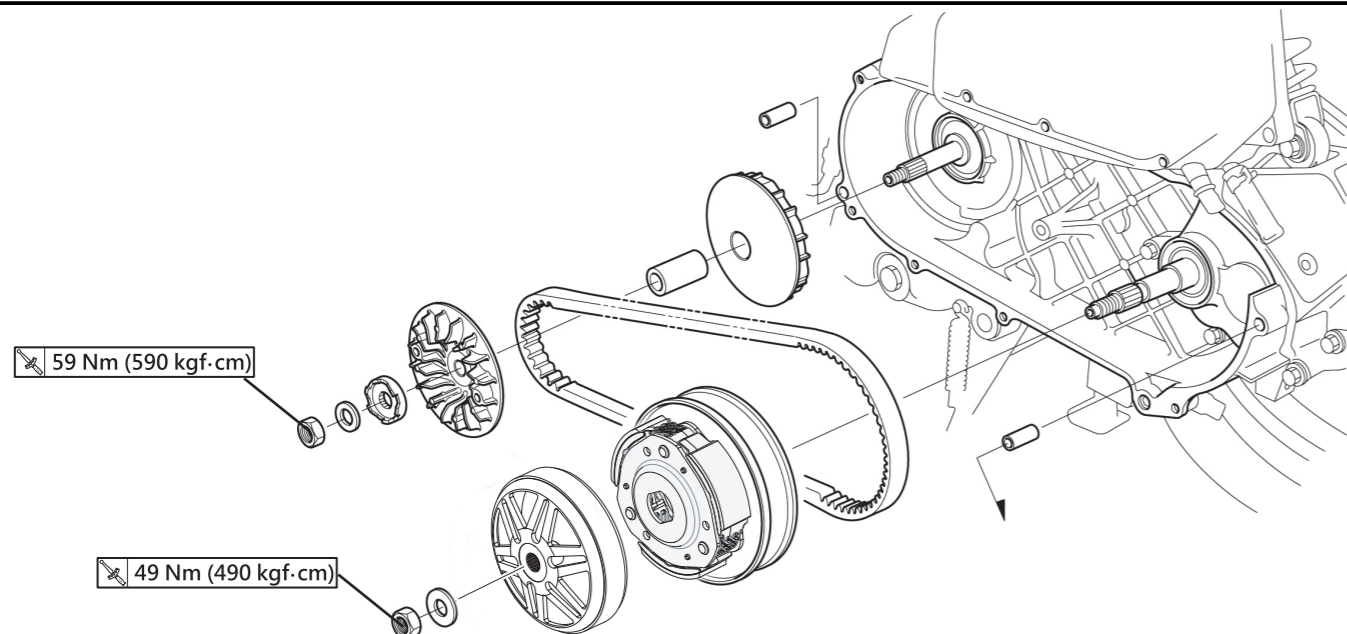
## 2-1 SPECIFICATIONS (SPORT CLUTCH)

● Size	D121.2 X H 38.2 mm
● Clutch weight	231g
● Clutch spring free length	31.5mm

## 2-2 SPECIFICATIONS (CLUTCH BELL)

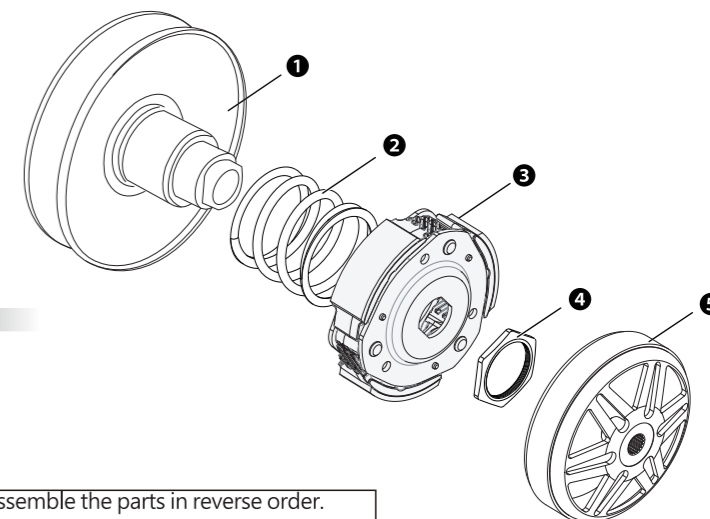
● Material	Carbon steel
● Weight	821g
● Speciality	Heavy-load and light-load design has better rotational accuracy and dynamic balance

## 3 INSTALLATION INSTRUCTION



**NOTE** Some processes must be followed to avoid the affection caused by wrong installation.

## 3 TORQUE CAM INSTALLATION INSTRUCTION



Please proceed as follows

- 1 Three Axle
- 2 Clutch Spring
- 3 weight Clutch (Accessories 1)
- 4 Clutch carrier assembly nut
- 5 Clutch Bell (Accessories 2)

**NOTE** Please do according to figure in order. Make sure to disassemble the parts in reverse order. Please refer to the above picture for installation sequence.

## 4 CLUTCH SPRING INSTALLATION INSTRUCTION

1. Please using one of below tool to install clutch spring

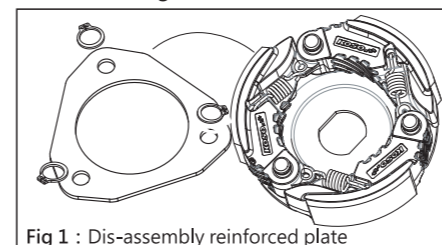


Fig 1 : Dis-assembly reinforced plate

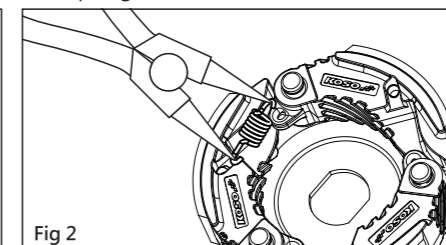


Fig 2

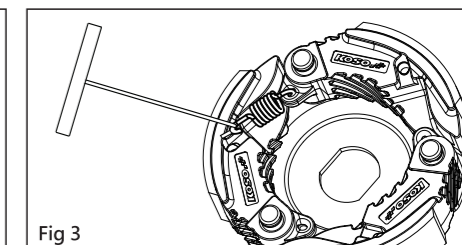


Fig 3

Needle nose Pliers ( Fig 2 ) - Prop and open the spring to install spring into spring fix hole. Spring hook ( Fig 3 ) - fix one side of spring into spring hole. Using spring hook pull spring and fix another side of spring into the position you would like install spring on.

⚠ Please using the spring tool to install clutch spring. Do not over pull spring when install. It may cause spring out of shape and the performance will showing not as expect.

2. Please change spring position per your inquiry.

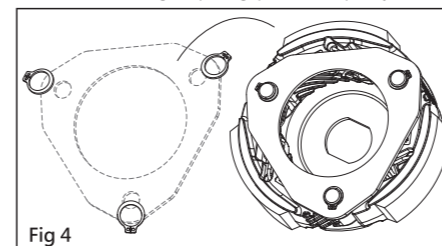


Fig 4

**⚠ CAUTION!** Please using original spring which with clutch only. If using non-original spring clutch damage. The warranty will be invalid.

**⚠ CAUTION!** Do not use this product with clutch bell which has sand blasting inside of it and Be sure the clutch and clutch hosing do not infected by oil when install.

5 POWER CURVE COMPARE CHART

