



● Thank you for purchasing our product. Please, read the instructions thoroughly and retain them for future reference.

### ⚠ Notice

- For installation, please follow the steps described in manual. Any damage caused by wrong installation shall be imputed to the users.
- Don't break or modify the wire terminal. To avoid the short circuit, please don't pull the wire when installing.
- Do not disassemble or change any parts excluding the manual description.
- The interior examination or maintenance should be executed by our professionals.

◎ MARK MEANING:

**NOTE** You could get the installation details from the information behind the mark.

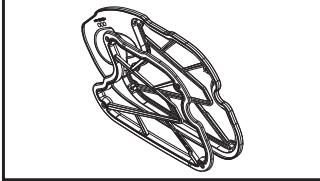
⚠ Some processes must be followed to avoid the affection caused by wrong installation.

⚠ **WARNING!** Some processes must be followed to avoid damages to yourself or the public.

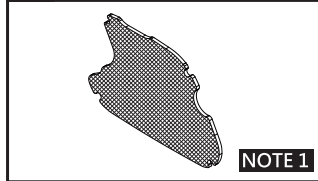
⚠ **CAUTION!** Some processes must be followed to avoid the damage to the vehicle.

## 1 Accessory

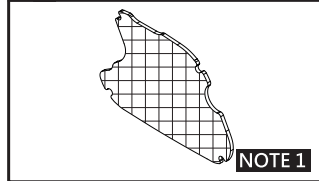
**1** Individual upper and lower cover of filter X1



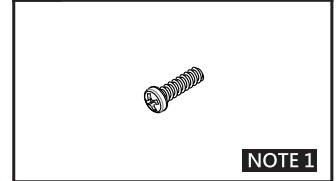
**2** High-density sponge X1



**3** Low-density sponge X1



**4** Screw X4

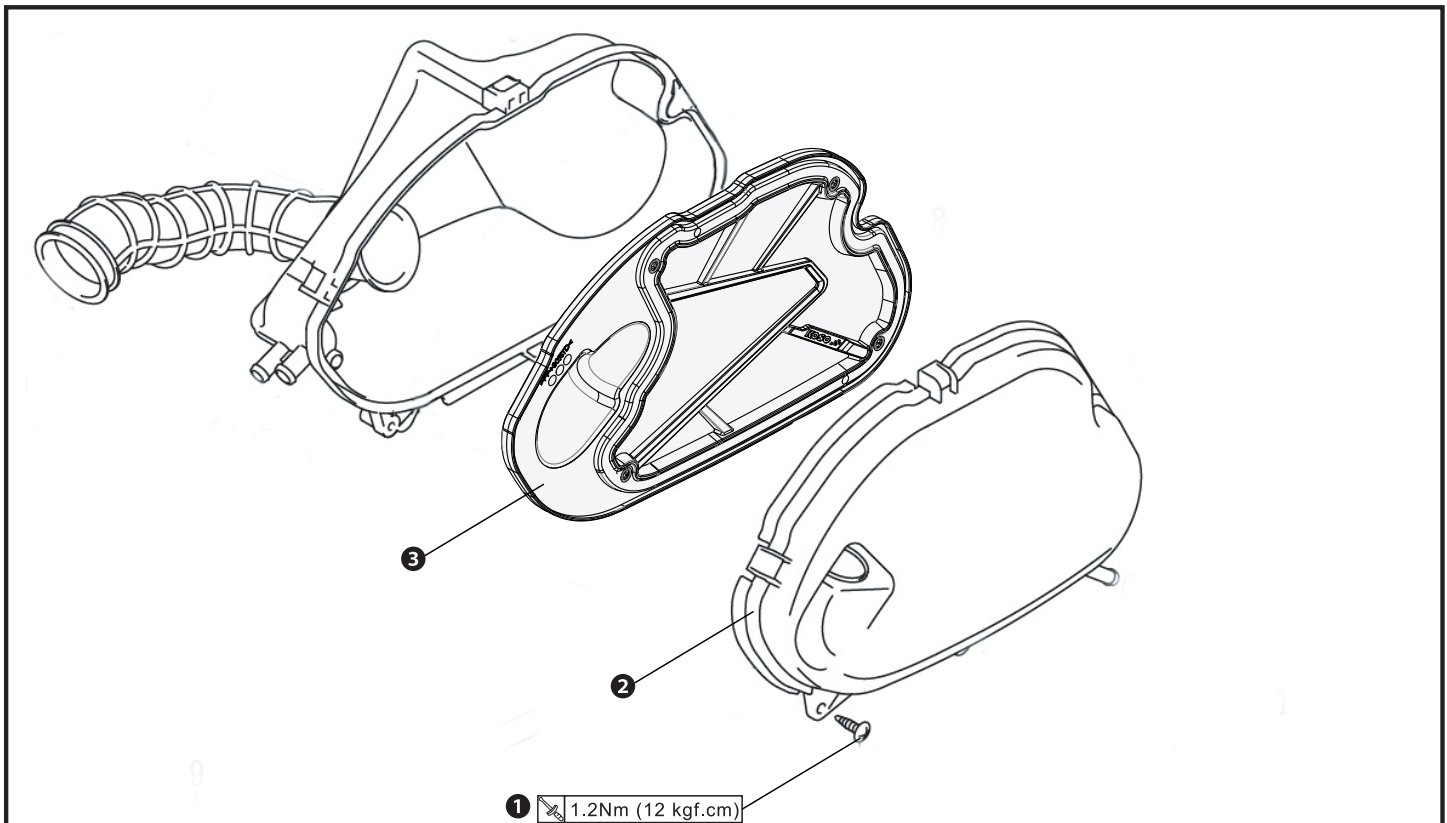


**NOTE 1** 1. The high-density sponge and screw component was already installed on the body when purchased.

**NOTE 1** 2. Please contact the local distributor if the items you open are not the same, with the above-listed one.

⚠ Denotes the tightening torque value.

## 2 Installation instruction



### Proceed as follows

1. Use appropriate tools to loosen ① screws x4, ② air filter cover and air filter.
2. Place the ③ KOSO air filter (accessory 1) in the correct position, and use appropriate tools to lock the air filter cover and ① screws x4 to the airbox.

⚠ **CAUTION!** If the bike falls down or have a fuel leakage, clean up the fuel absorbed by the air filter (warning: Fuel leakage may cause fire during engine start).

### 3 Replace filter cartridge

- To replace filter cartridge, remove ① screws and ② replace the foam (two foams with different densities are available). After replacing the foam, make sure to tie up all necessary screws.

**⚠ CAUTION!** To avoid air leakage, make sure to install the foam properly.

