



• Thank you for purchasing the our product. Before installing, please read the instruction carefully and keep it for future re ference.

⚠ NOTICE

- To install, follow the steps as described in the manual. Any damages caused by not following directions voids warranty.
- Correct tools must be used for installation.
- Do not modify any parts unless specifically stated in the instruction manual.
- Interior controller maintenance should be performed by a professional only.

• **SYMBOL NOTE:**

NOTE Read this information carefully regarding the essential features.

⚠ Some procedures must be followed to avoid damages to the instrument.

⚠ **CAUTION!** Some processes must be followed to avoid the damage to the vehicle.

🔧 Denotes the tightening torque value.

1-1 ACCESSORY

1 AIR FILTER COVER



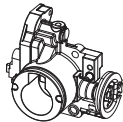
NOTE Please contact your local distributor if the items received are not the same as the one listed above.

1-2 Optional Accessories

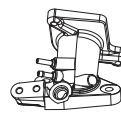
1 CYLINDER



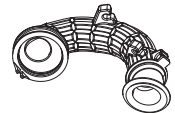
2 THROTTLE BODY



3 INTAKE MANIFOLD X1



4 CON NECTION TUBE

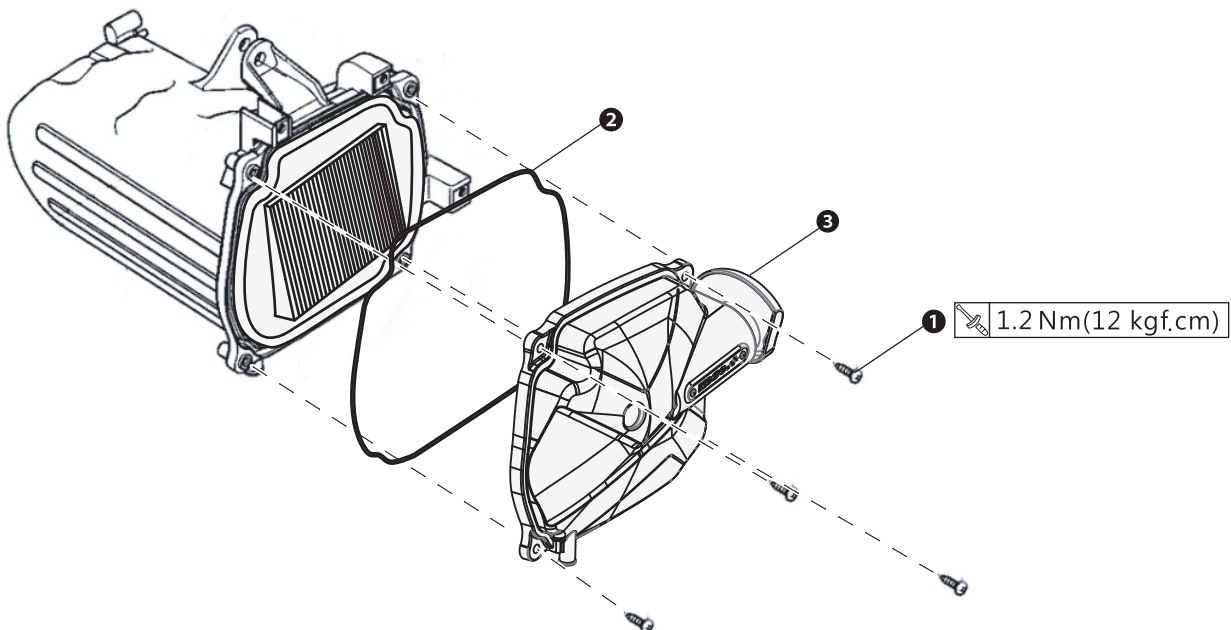


5 AIR FILTER



NOTE Some of these items may not sell in particular area, for more information, please contact with our local dealer.

2 INSTALLATION INSTRUCTION

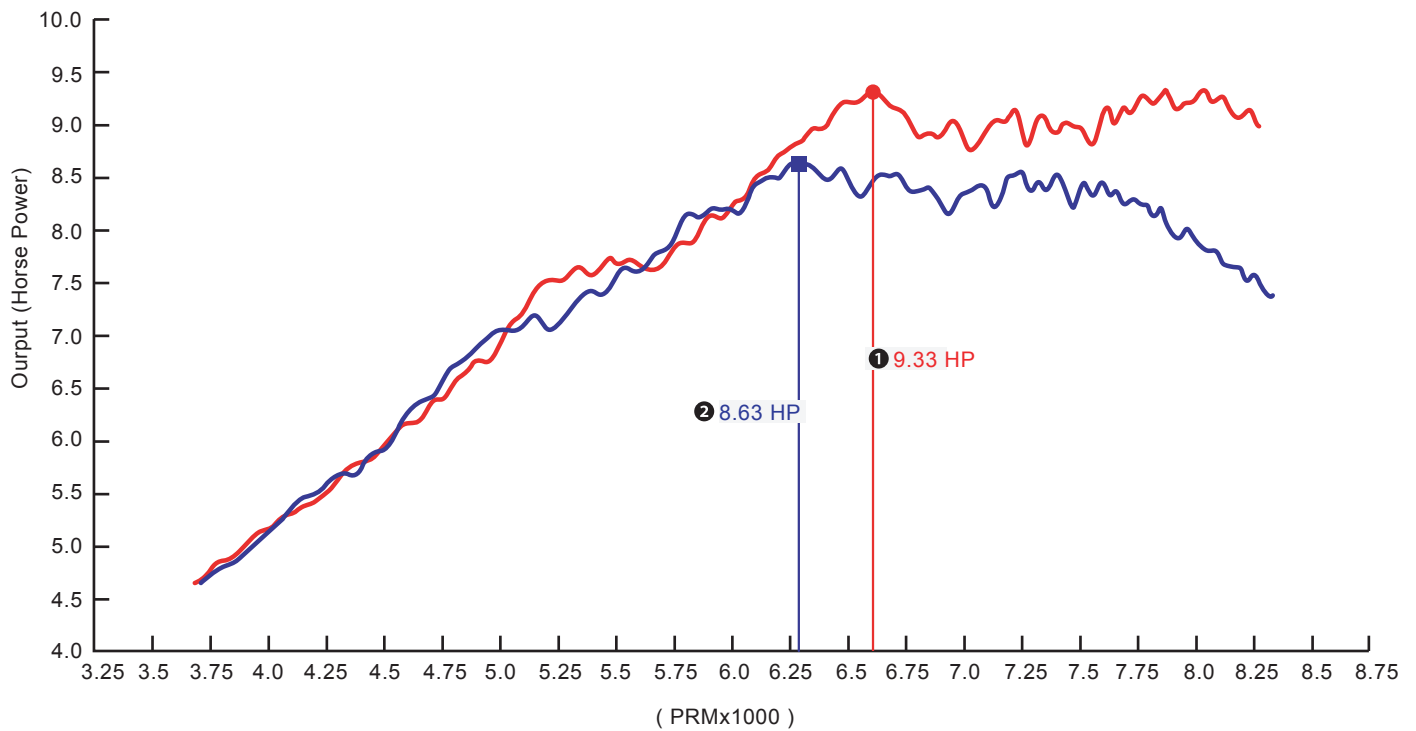
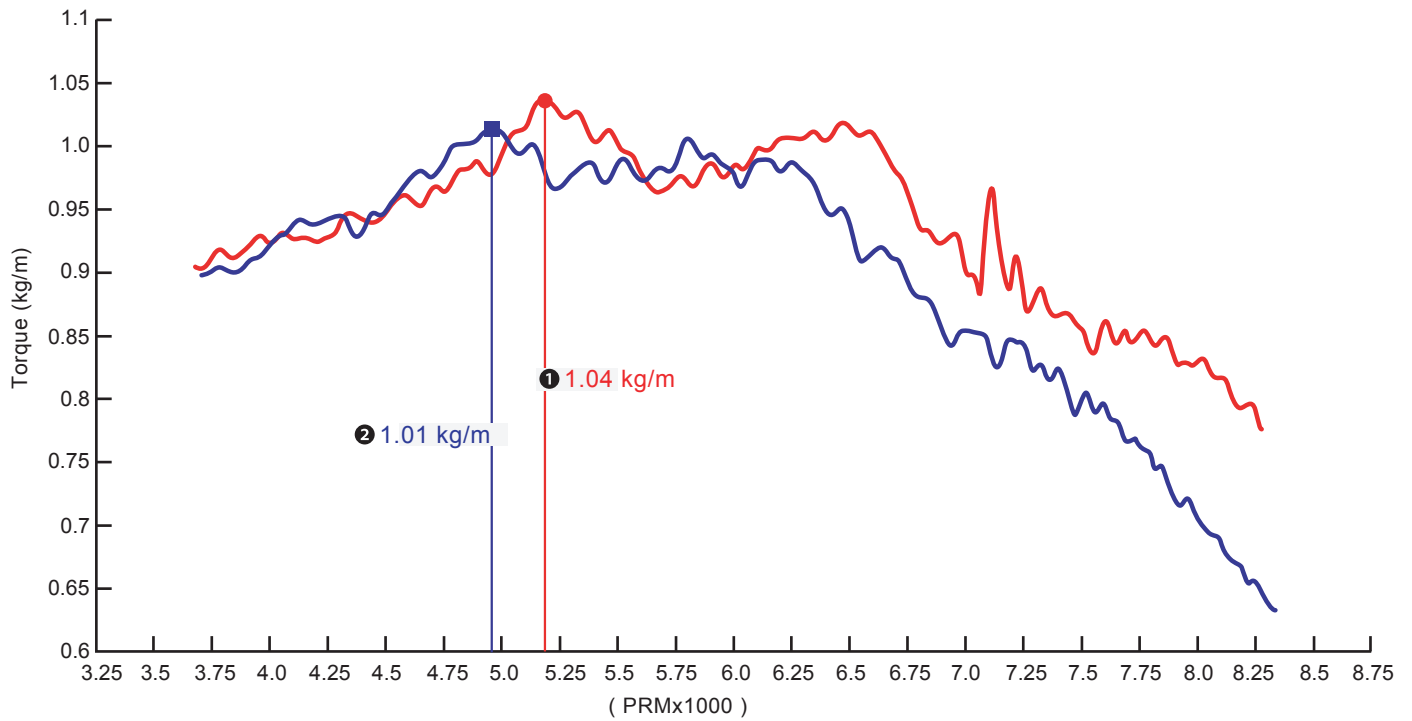


Proceed as follows

1. Please Use appropriate tools to loosen ① screws x4, air filter cover.
2. Please Install the ② sealing ring on the ③ KOSO air cleaner case(accessory 1).
3. Please Place the ③ KOSO air filter cover in the correct position, and use appropriate tools to lock the air filter cover and.

⚠CAUTION! If the bike falls down or have a fuel leakage, clean up the fuel absorbed by the air filter (warning: Fuel leakage mat cause fire during engine start).

3 ACCELERATION SPEED TEST DIAGRAM



- NOTE ①** KOSO Intake+KOSO Throttle body+KOSO Air cleaner box connection tube+KOSO Air filter cover
- NOTE ②** STD
- NOTE** Test results vary with testing environment and weather. This test chart is for reference only.