



Thank you for purchasing our product. Please, read the instructions thoroughly and retain them for future reference.

⚠ NOTICE

- To install, follow the steps as described in the manual. Any damages caused by not following directions voids warranty.
- Correct tools must be used for installation.
- Do not modify any parts unless specifically stated in the instruction manual.
- Interior control maintenance should be performed by a professional only.

Ⓜ MARK MEANING:

NOTE You could get the installation details from the information behind the mark.

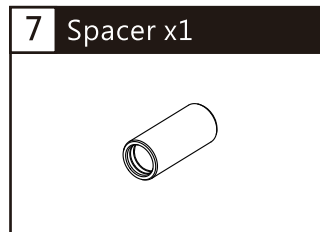
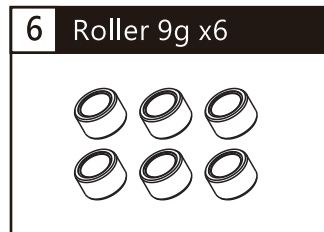
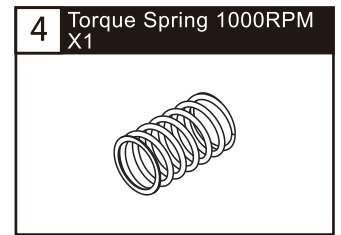
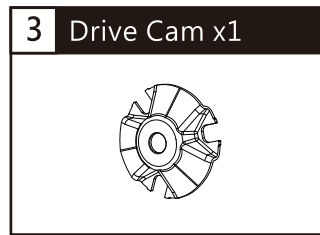
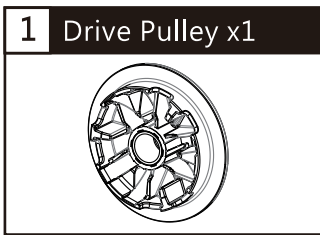
⚠ Some processes must be followed to avoid the affection caused by wrong installation.

⚠ WARNING! Some processes must be followed to avoid damages to yourself or the public.

⚠ CAUTION! Some processes must be followed to avoid the damage to the vehicle.

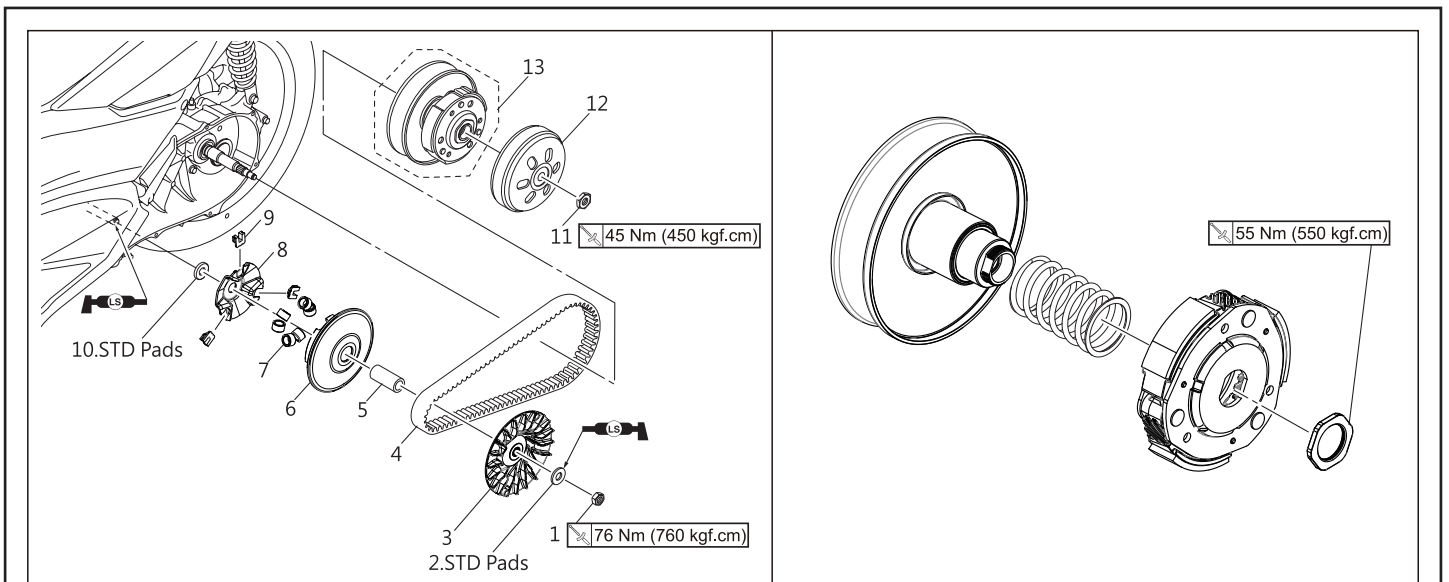
Denotes the tightening torque value

1 ACCESSORIES



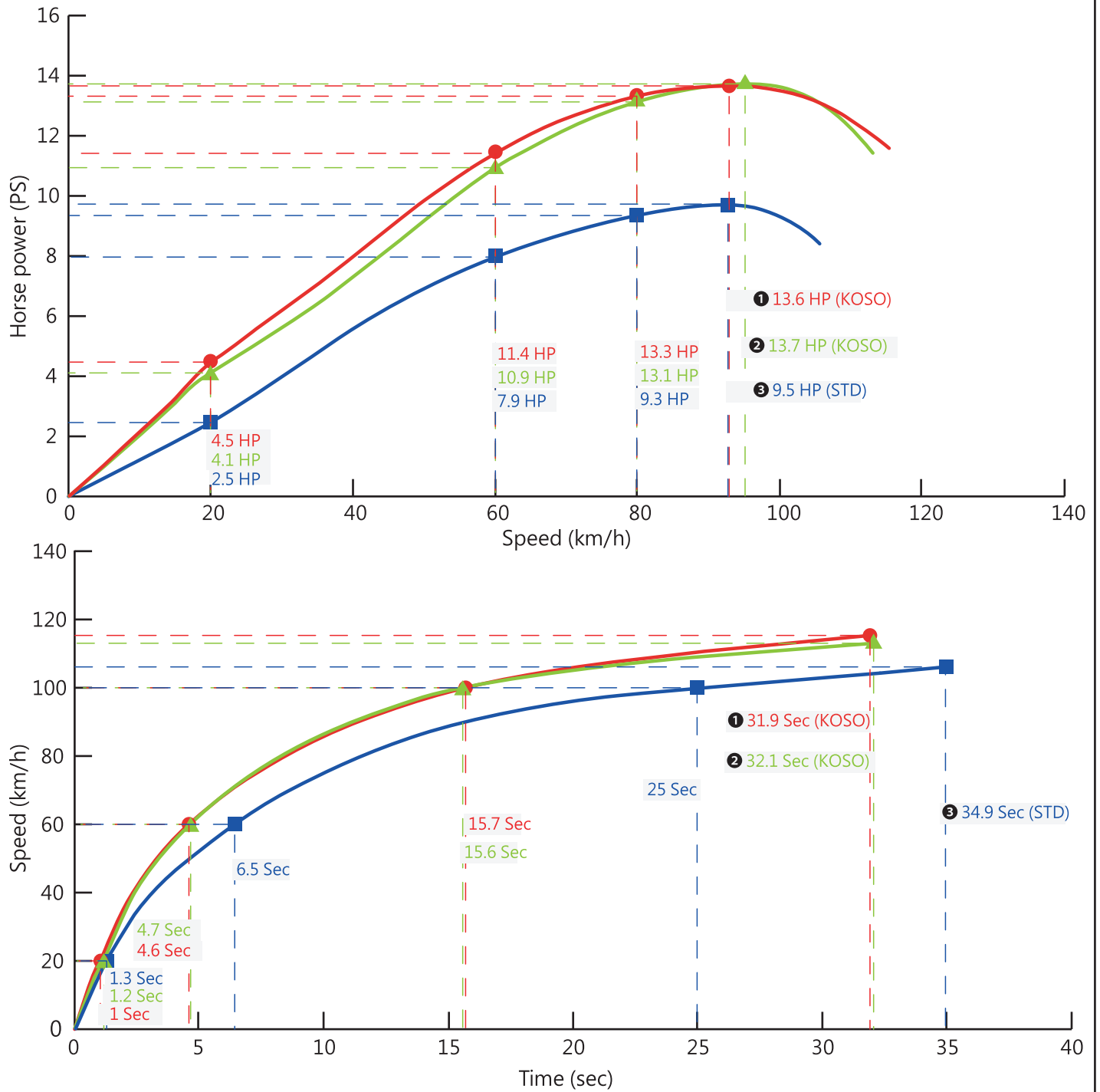
NOTE Please contact the local distributor if the items you open are not the same, as the above-listed one.

2 INSTALLATION INSTRUCTION



NOTE Please do according to figure in order. Make sure to disassemble the parts in reverse order. Please refer to the above picture for installation sequence.

3 ACCELERATION SPEED TEST DIAGRAM



- NOTE 1** KOSO 59mm Cylinder+ KOSO Transmission Power Kit V2. (Roller: 11g x3+12g x3)
- NOTE 2** KOSO 59mmCylinder+ KOSO Transmission Power Kit V1
- NOTE 3** STD.
- NOTE** Test results vary with testing environment and weather. This test chart is for reference only.