



- Thank you for purchasing our KOSO TT style mirror set. Before installing, please read the instruction sheet carefully. We recommend that you store the instruction sheet in a safe place for future reference.

NOTICE

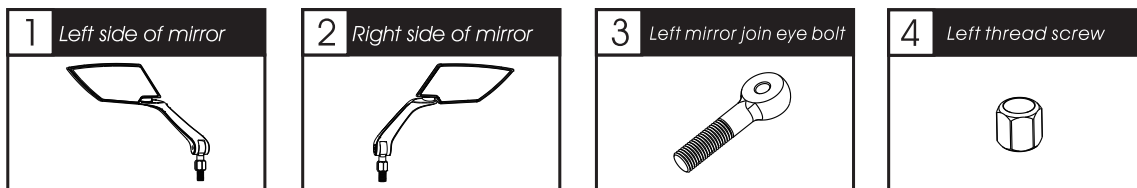
- To install, follow the steps as described in the manual. Any damages caused by not following directions voids warranty.
- Correct tools must be used for installation.
- Do not modify any parts unless specifically stated in the instruction manual.
- Interior mirror maintenance should be performed by a professional only.

EXPLANATION OF SYMBOLS

Note Read this information carefully regarding the essential features.

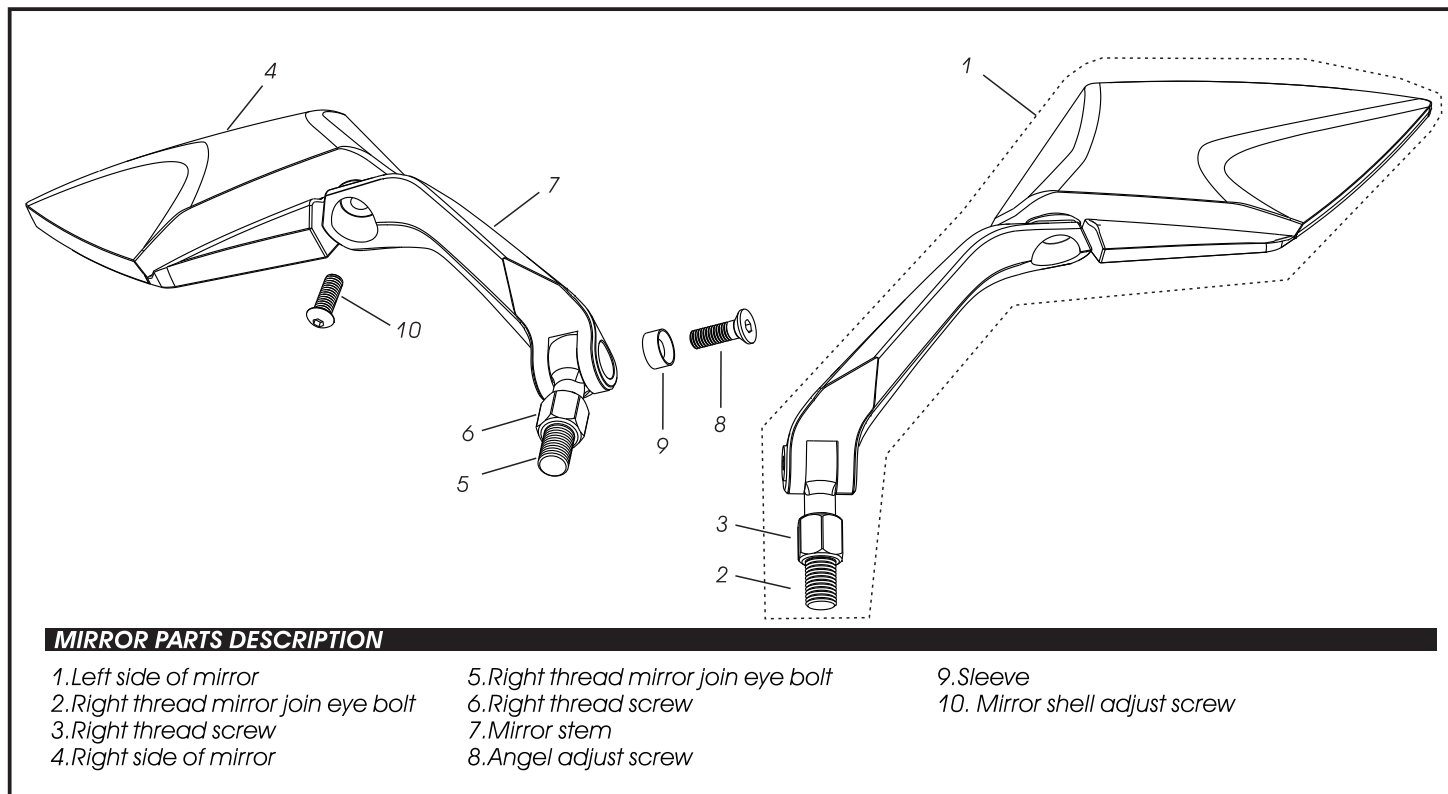
⚠ Follow these instructions accurately to avoid possible damage.

1 ACCESSORIES LIST-FOR MIRROR SET

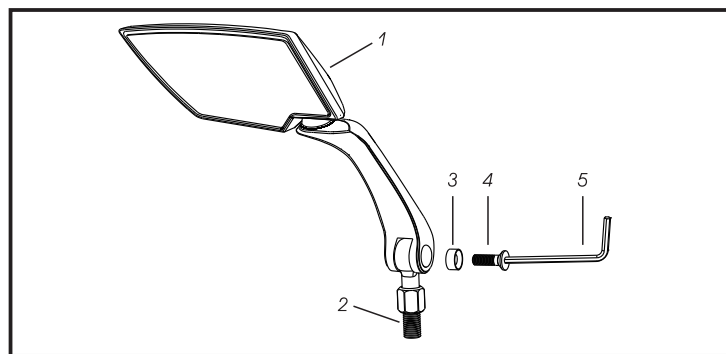


Note Please make sure that all of the aforementioned accessories are included when you open the kit.

2 PARTS LIST



3 INSTALLATION INSTRUCTIONS

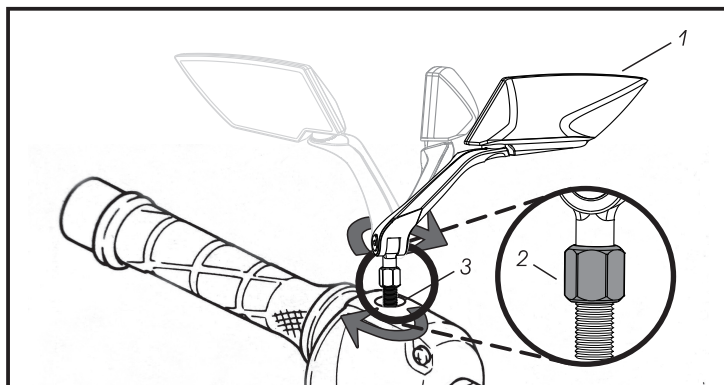


1. MIRROR STEM INSTALLATION INSTRUCTION

1. Left side of mirror
2. Right mirror join screw
3. Sleeve
4. Angel adjust screw
5. M6 wrench

⚠ You could turn M6 wrench clockwise to lock mirror up on the eyebolt after angel adjust.

⚠ Install both side mirrors with the same step.

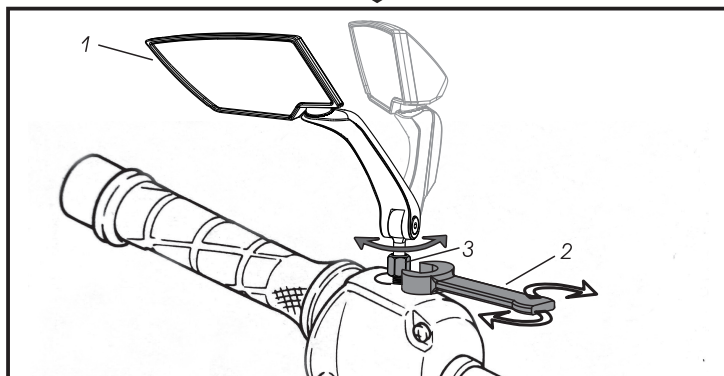


2. MIRROR INSTALLATION

Note For YAMAHA applications; Left side of mirror is always with right thread. Turn mirror clockwise to lock the mirror on the mirror base. Right side of mirror is always with the left thread. Turn mirror counterclockwise to lock mirror on the mirror base.

1. Left side of mirror X 1 Accessory 1
2. Right thread adapter nut.
3. Left side of mirror base.

⚠ Turn right thread adapter nut to the top of mirror. Turn left side of mirror 1 clockwise to fasten on mirror base 3

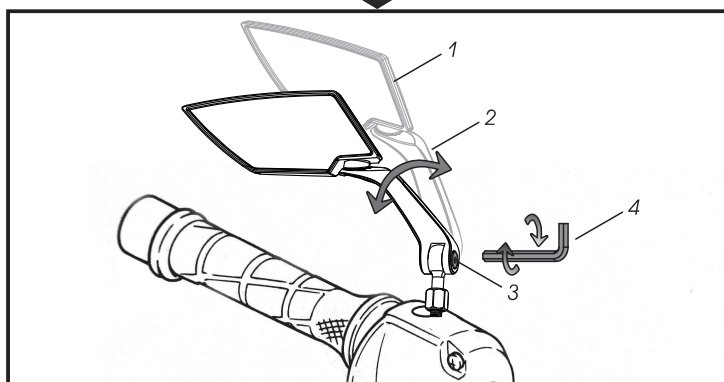


3. FIX MIRROR ON MIRROR HOLDER

1. Left side of mirror
2. M14 Wrench
3. Right thread nut

⚠ After Adjust mirror angel. Using M14 wrench (2) turn clockwise to fix right thread nut.

⚠ Turn anti-clockwise to lock up right thread nut. Turn clockwise to lock up left thread nut.

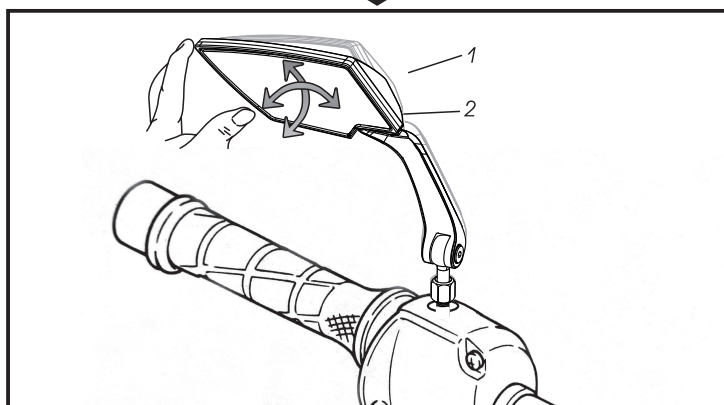


4. ADJUST PITCH ANGEL

1. Left side of mirror
2. Left mirror stem
3. M6 wrench

⚠ Adjust pitch angel(2) to be the angel you wish. Using M6 wrench (4) turn clockwise to lock up pitch adjust screw.

⚠ Install both side mirrors with the same step



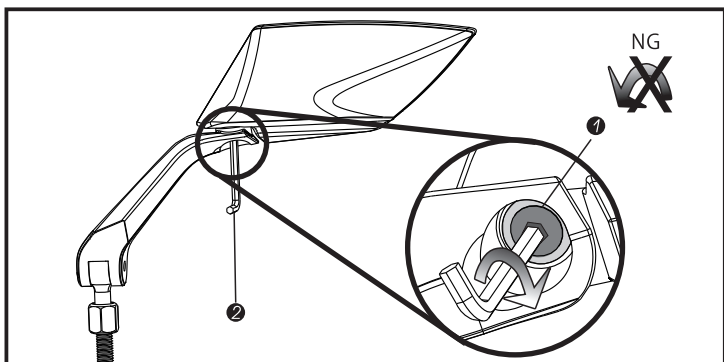
5. ADJUST MIRROR SHELL POSITION

1. Left side of mirror
2. Left mirror shell

⚠ Adjust the mirror shell angel as you wish.

⚠ Both side mirrors shell adjust with the same step.

4 MAINTAIN INSTRUCTION



Note Frequently adjust mirror angel will makes part abrasion. This status will makes mirror loose.

1. TIGHTEN MIRROR SHELL ADJUST SCREW.

1. Mirror shell fasten screw.
2. M5 wrench

⚠ Using M5 wrench (2) turn clockwise to fasten mirror shell adjust screw.

⚠ Do not turn adjust screw anti-clockwise. It could be makes mirror shell separate with mirror stem.