



Thank you for purchasing our product. Please, read the instructions thoroughly and retain them for future reference.

⚠ NOTICE

- To install, follow the steps as described in the manual. Any damages caused by not following directions voids warranty.
- Correct tools must be used for installation.
- Do not modify any parts unless specifically stated in the instruction manual.
- Interior control maintenance should be performed by a professional only.

◉ MARK MEANING:

NOTE You could get the installation details from the information behind the mark.

⚠ Some processes must be followed to avoid the affection caused by wrong installation.

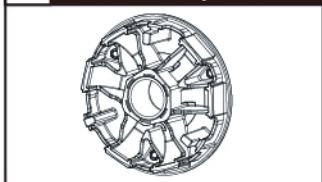
⚠ **WARNING!** Some processes must be followed to avoid damages to yourself or the public.

⚠ **CAUTION!** Some processes must be followed to avoid the damage to the vehicle.

⚡ Denotes the tightening torque value

1 ACCESSORIES

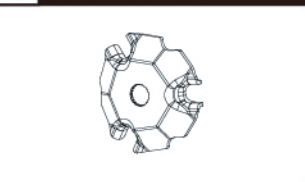
1 Drive Pulley x1



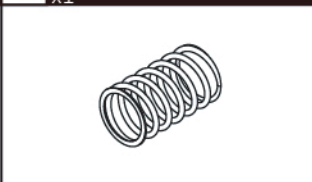
2 Drive Face x1



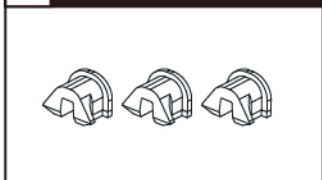
3 Drive Cam x1



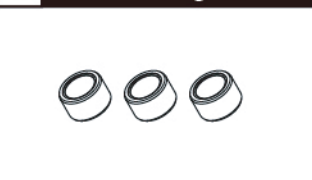
4 Torque Spring 1000RPM x1



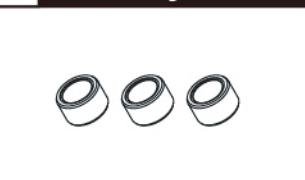
5 Slider x3



6 Roller 12.5g x3



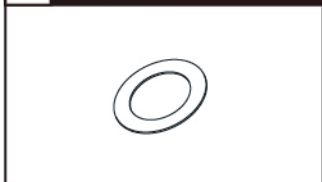
7 Roller 13g x3



8 Spacer x1

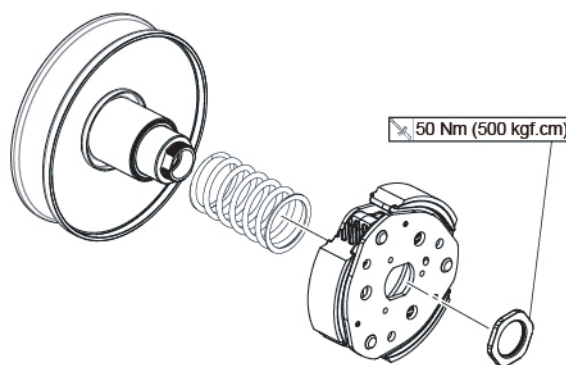
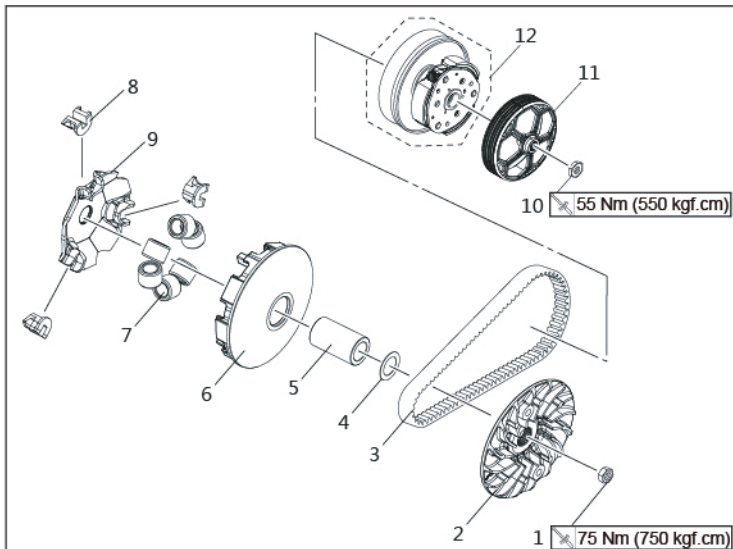


9 Pads x1



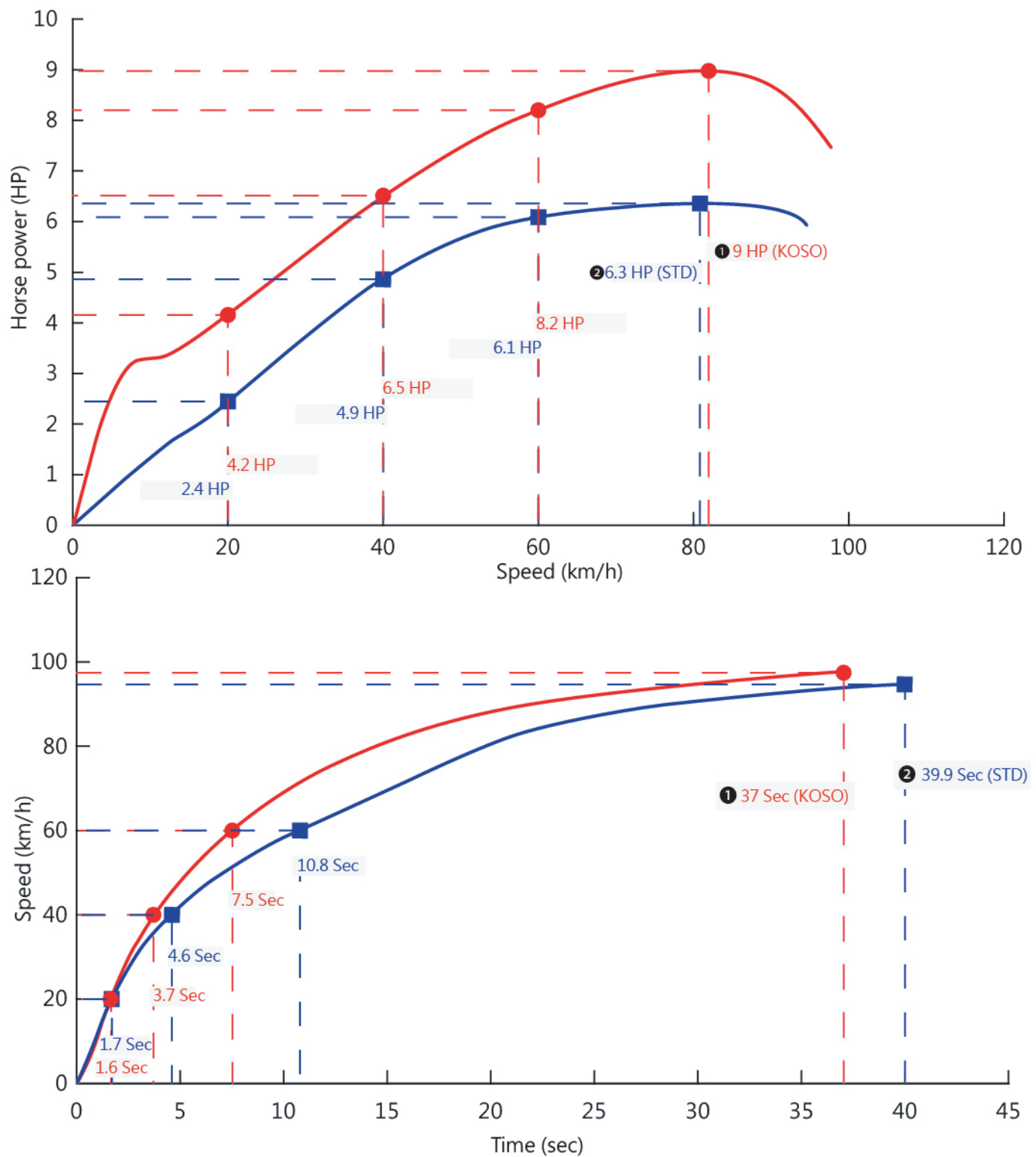
NOTE Please contact the local distributor if the items you open are not the same, as the above-listed one.

2 INSTALLATION INSTRUCTION



NOTE Please do according to figure in order. Make sure to disassemble the parts in reverse order. Please refer to the above picture for installation sequence.

3 ACCELERATION SPEED TEST DIAGRAM



NOTE 1 Drive Pulley +Drive Face+Drive Cam+Spring 1000 RPM+Slider x3+Roller (12.5g x3+13g x3=76.5g)+Spacer+Pads .

NOTE 2 STD.

NOTE Test results vary with testing environment and weather. This test chart is for reference only.