



- Thank you for purchasing the Honda Grom Super flow oil pump. Please, read the instructions thoroughly and retain them for future reference.

⚠ Notice

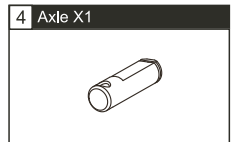
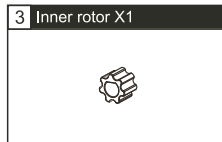
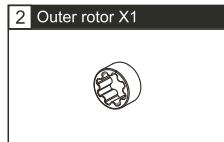
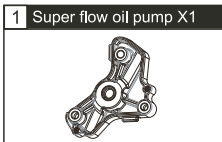
- Any Damages caused by faulty installation shall be imputed to the users.
- Maintenance and repairs should be executed by a professional mechanic only.

©**SYMBOL MEANING:**

The torque value required for fastening the screws.

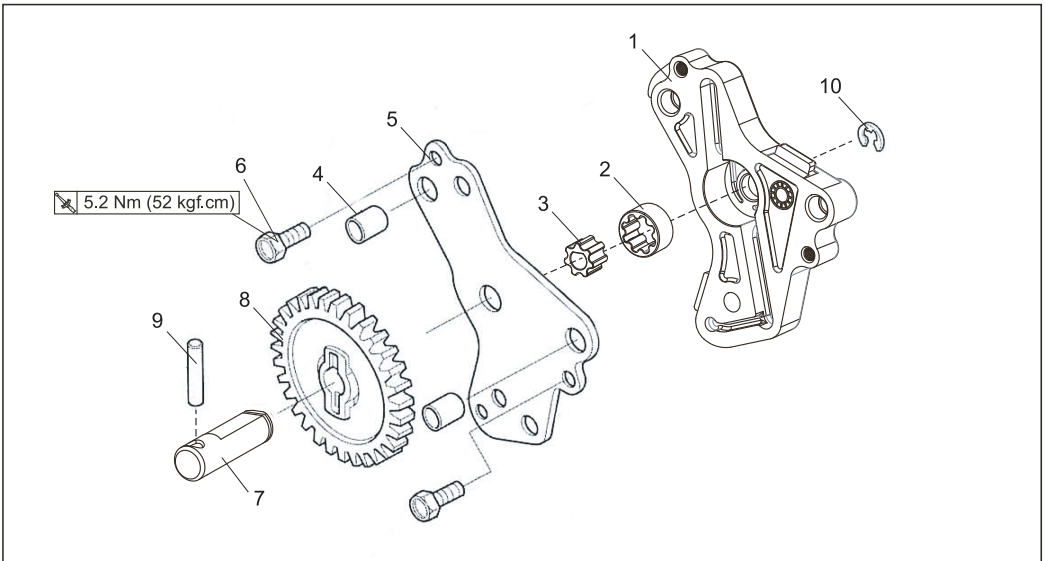
NOTE Please read carefully, this is essential information.

1 ACCESSORIES



NOTE Please contact your local distributor if the items you received are not the same as the items listed above.

2 OIL PUMP ASSEMBLY

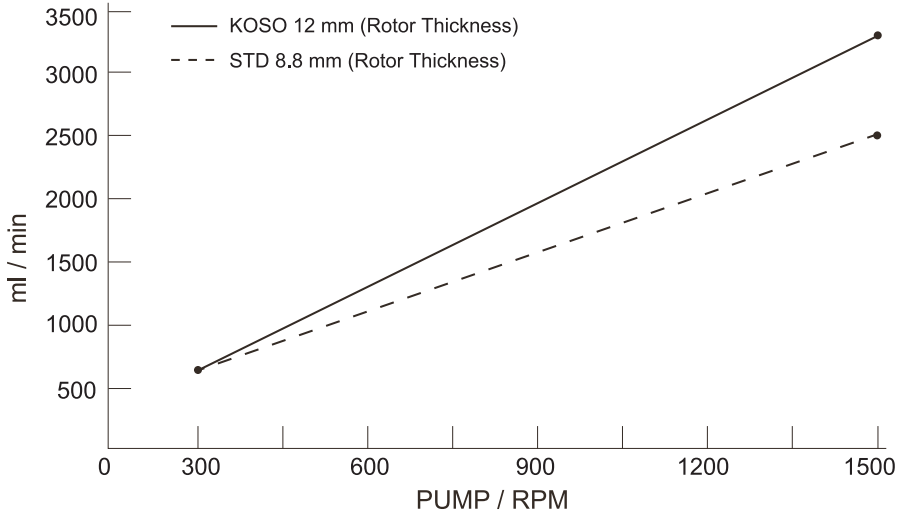


PART DESCRIPTIONS

- | | | |
|--------------------------------------|------------------------------|------------------------------|
| 1. Super flow oil pump (Accessory 1) | 2. Outer rotor (Accessory 2) | 3. Inner rotor (Accessory 3) |
| 4. Lock pin | 5. Gasket | 6. M5XL12 mm Screw |
| 7. Axle (Accessory 4) | 8. Gear | 9. Lock pin |
| 10. E-Clip | | |

NOTE Please, assemble in the order shown above. Make sure to disassemble the parts in reverse order (highest number to lowest number).

3 OIL PUMP FLOW CURVE CHART



NOTE PUMP RPM x 1.5=ENGINE RPM

NOTE Pump flow is 40% higher than the original one.