



● Thank you for purchasing our product. Before installing/operating the product, please read the instructions carefully and retain them for future reference.

**⚠ Attention!**

- For installation, please follow the steps described. Any damage caused by wrong installation shall be imputed to the users.
- To avoid a short circuit from occurring do not pull or modify the wires during installation.
- Do not disassemble or change any parts. Opening and disassembling this unit will void any warranty.
- Maintenance and repairs should be executed by our professionals only.

Ⓞ Symbol description:

**NOTE**

⚠ Some procedures must be followed to avoid damages to the instrument.

⚠ **WARNING!** Certain procedures must be followed to avoid damages to yourself, to the vehicle or others.

**1 Accessories**

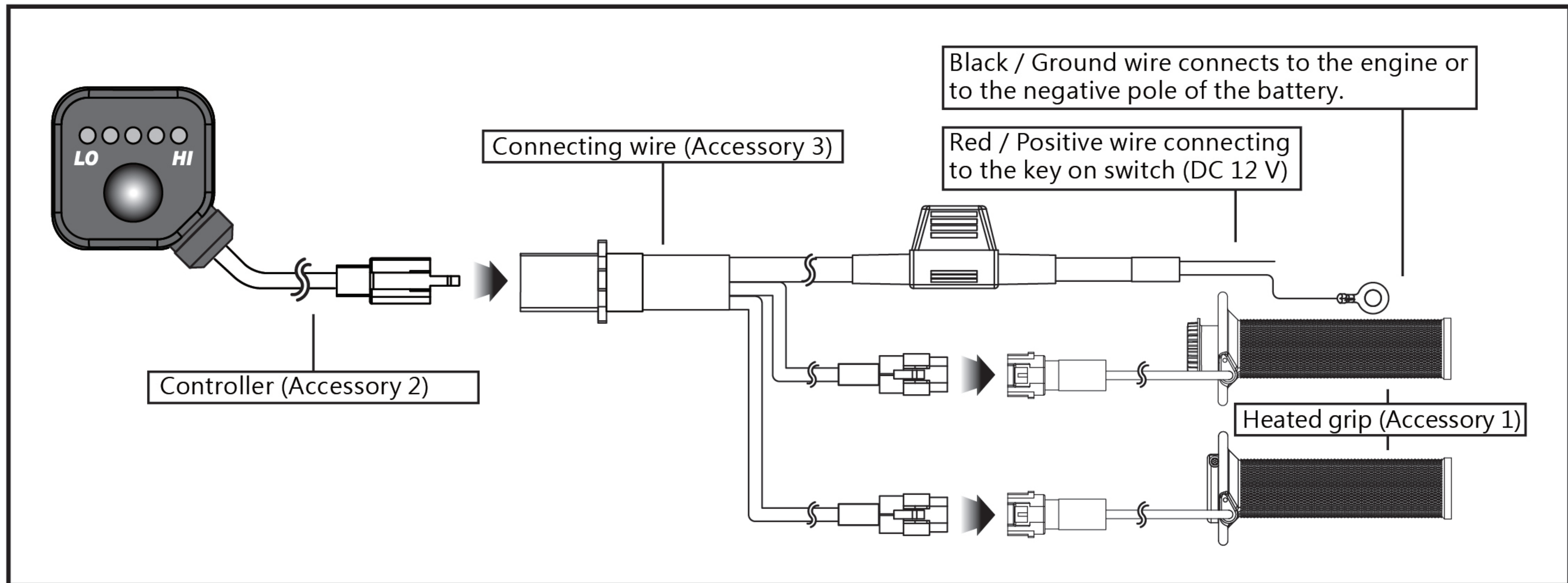
<b>1</b> Heated grip X2 	<b>2</b> Controller X1 	<b>3</b> Connecting wire X1 	<b>4</b> Lower Clamp X1 	<b>5</b> Lower Clamp 1" X1 
<b>6</b> Lower Clamp 1 1/8" X1 	<b>7</b> Locking Mount X1 	<b>8</b> M2X8 screw X2 	<b>9</b> M3XP0.5X25L screw X1 	<b>10</b> M3 nut X1 
<b>11</b> Bar-end cap X2 	<b>12</b> Throttle Adaptor Spacer X1 	<b>13</b> Throttle Adaptor-A X1 	<b>14</b> Throttle Adaptor-B X1 	<b>15</b> Throttle Adaptor-C X1 
<b>16</b> Throttle Adaptor-D X1 	<b>17</b> Throttle Adaptor-E X1 	<b>18</b> Throttle Adaptor-F X1 		

**2-1 Specifications**

	<ul style="list-style-type: none"> <li>● Heating stage 1st stage (low) ~ 5th stage (high)</li> <li>● Fuse type 4A (ASP)</li> <li>● Effective temperature range JIS D 0203</li> <li>● Voltage DC 12 V</li> <li>● Switch size W38.2 X L38.2 X H16.5 mm</li> <li>● Switch weight (with wire) About 88 g</li> </ul>
	<p><b>NOTE</b> Design and specifications are subject to change without notice!</p>



### 3-3 Wiring installation instructions



### 4-1 Specifications

● Turn the key on to enter the standby mode.

**NOTE** This stage is for self-check without enabling the heating function.

⚠ At this moment the LED lights will flash once from left to right.

**A. Heating stage setup**

● Stand by mode, press the push button once to enter into the heating mode.

**NOTE** The default setting is off.

**B. Memory of heating mode**

● Example : To set the heating stage to the third stage.

● Press the push button to select the desired set value.

**NOTE** The switch is characterized with memory function, and 3 seconds after setting the number of stage, the set number of stage, will be memorized automatically.

● EX : The current heating stage is set to the 1st stage.

⚠ At this moment the LED lights will flash once from left to right.

**NOTE** Setting range : Off → 1st stage (low temperature) → 2nd stage → 3rd stage → 4th stage → 5th stage → (high temperature)

**C. Quick heating mode**

● EX : Set the heating stage from 1st stage to 3rd stage.

⚠ At this moment the LED lights will flash once from left to right.

**B. Memory of heating mode**

● Memory of heating mode.

● EX : The last heating stage in memory before turning off the switch is the 3rd stage.

⚠ At this moment the LED lights will flash once from left to right.

**C. Memory of heating mode**

● Stand by mode, press and hold the push button for 3 seconds to enter into the quick heating mode.

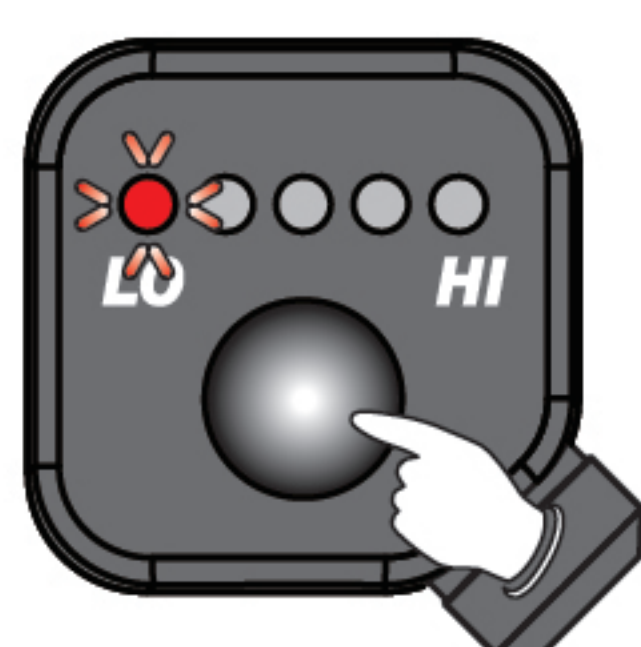
**C. Quick heating mode**

● Quick heating mode.

⚠ At this moment the LED flashes.

**NOTE** If the temperature is felt enough, press the push button once to stop to stop the quick heating.

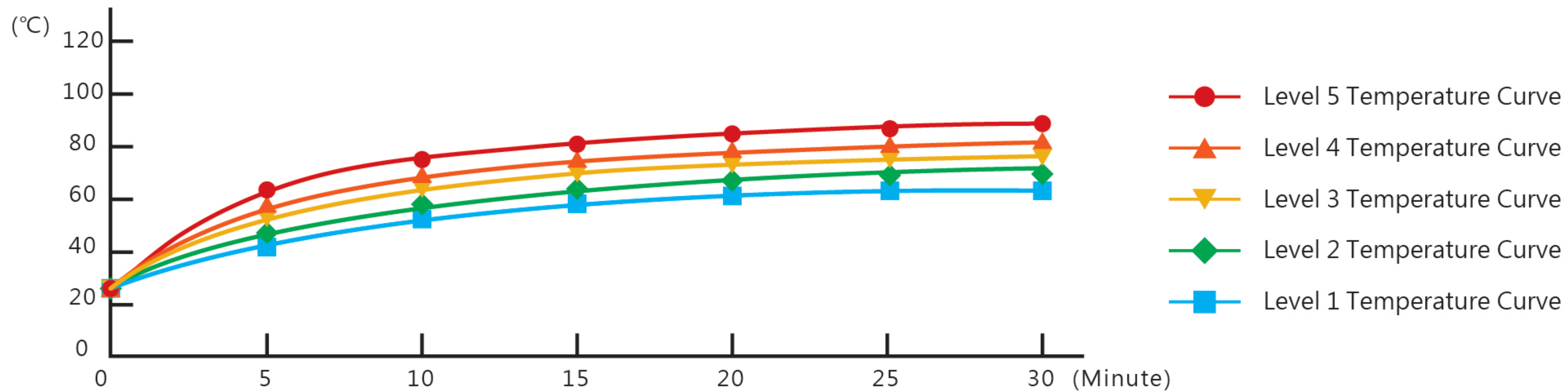
### 4-2 Low-voltage mode Description



- The heating system will turn off automatically when the voltage is lower than 11.5 V.
- ⚠ At this moment, LED flashes.
- Stand by mode will be enabled when the voltage over 11.5 V is restored.



## 2-2 Heated grip testing data

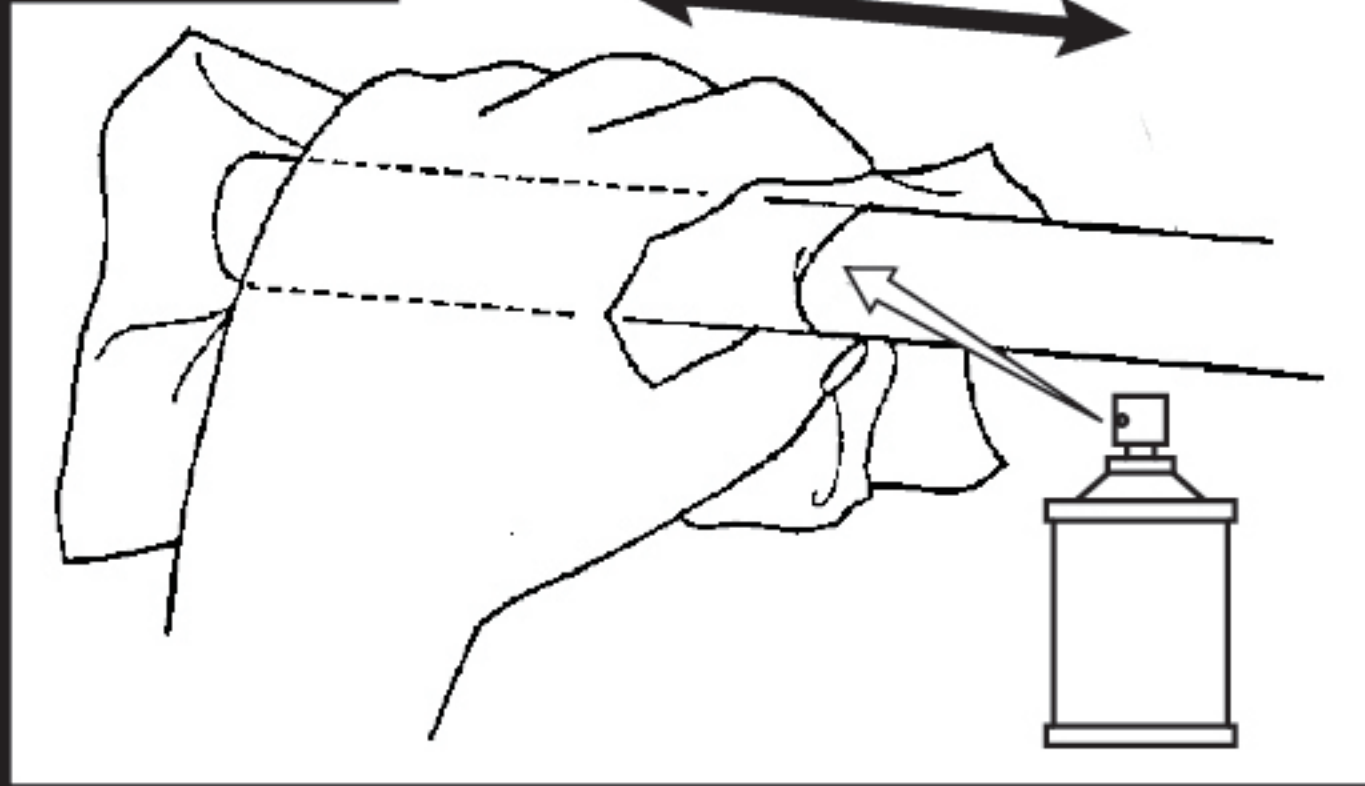


**NOTE** The testing environment is at 26 Degrees Celsius, with working voltage of 13.5 V.

## 3-1 Installation instructions

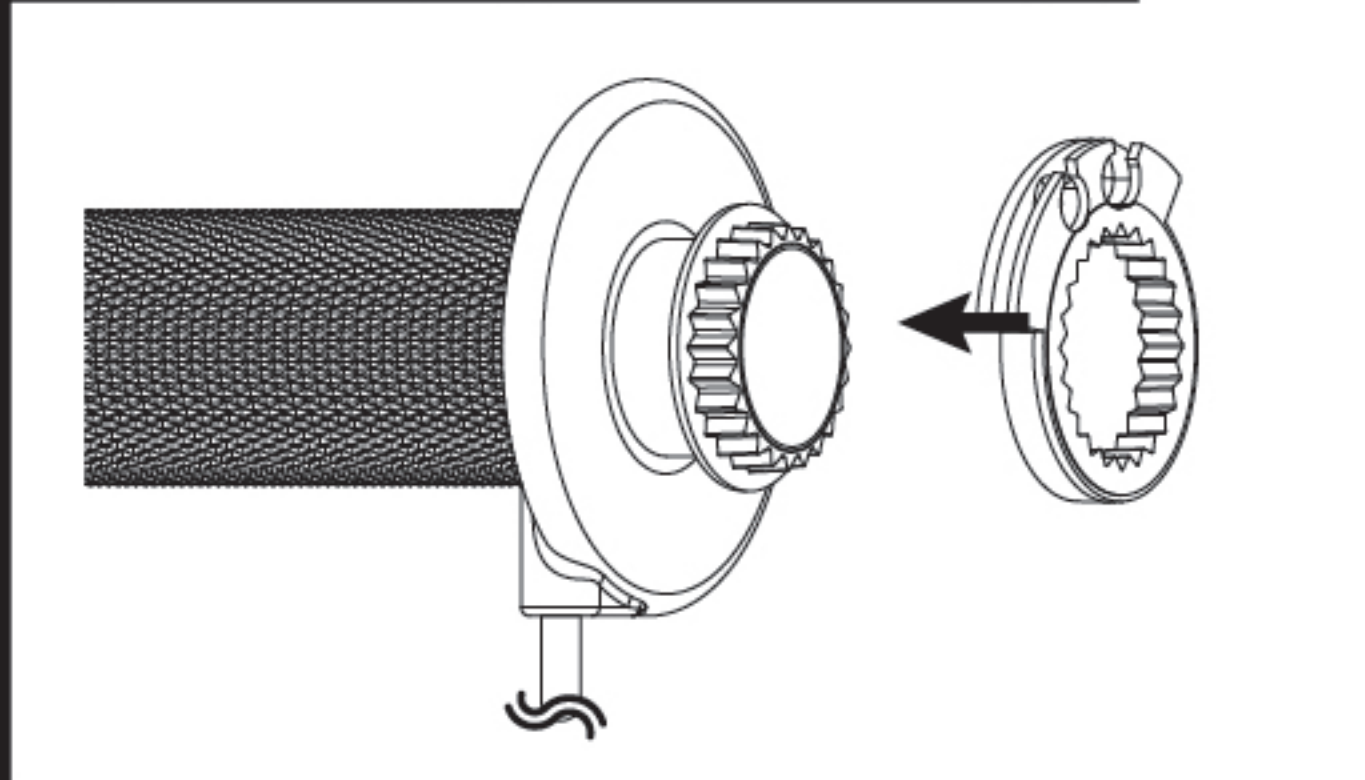
### Heated grips installation procedure

Figure 1



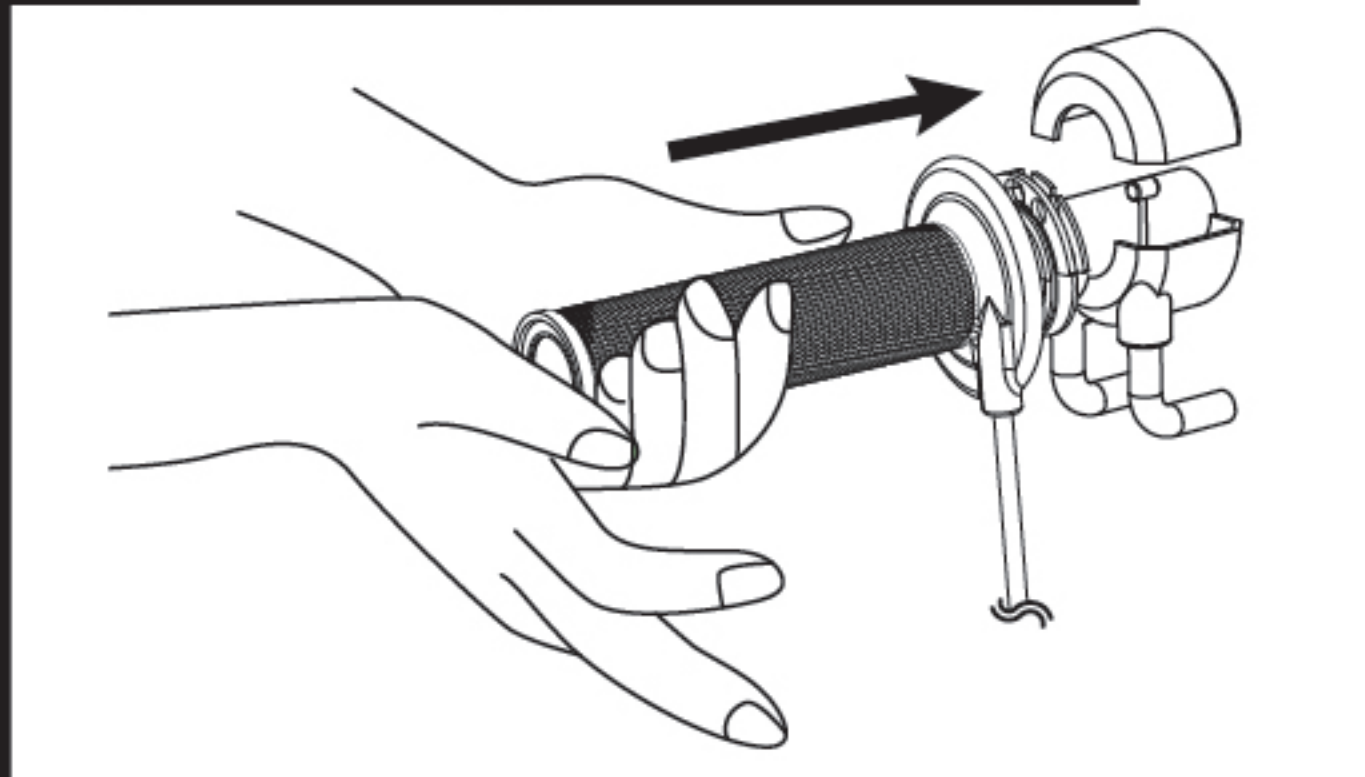
1. Use an appropriate tool to remove the original handlebar grips.
2. Apply a cleaning agent and wipe back and forth to remove the glue residue from the handlebar.

Figure 2 (Right Hand Grip)



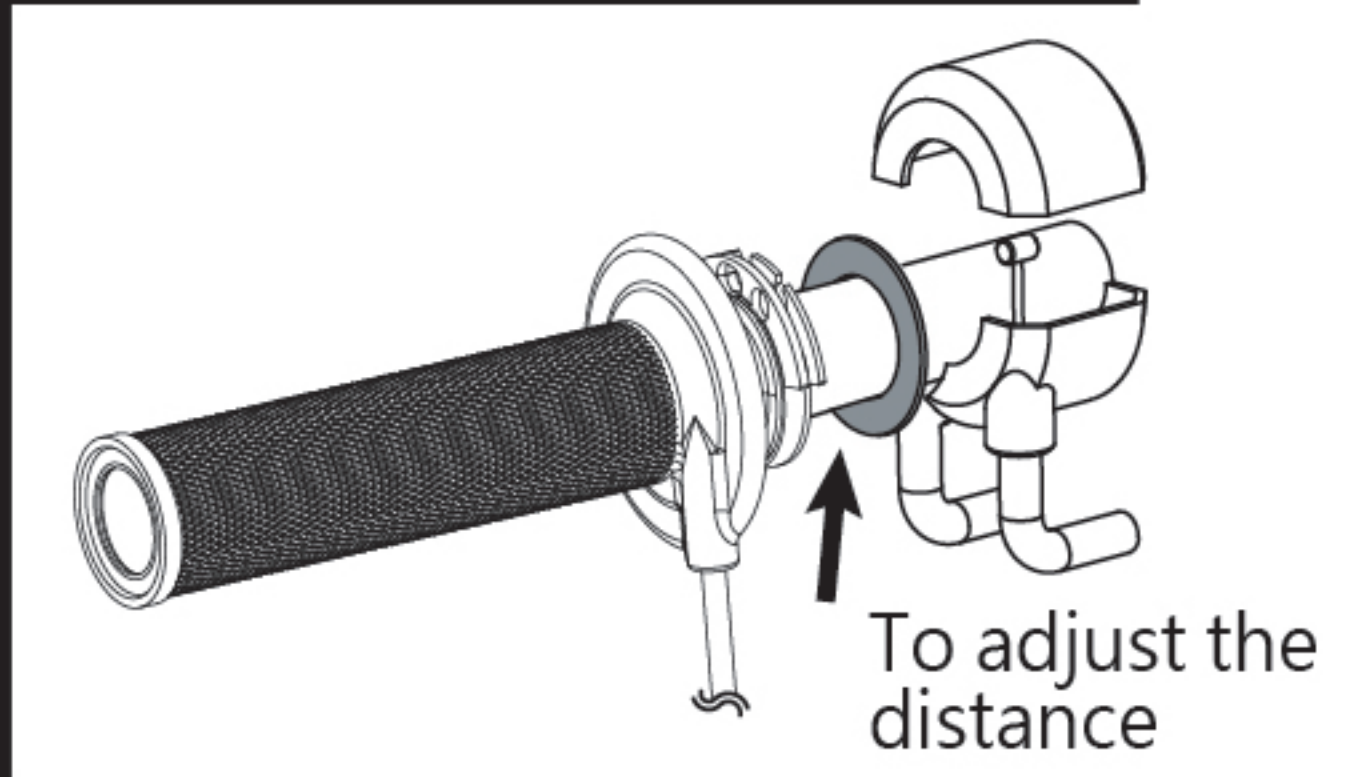
3. Use appropriate throttle adaptor (Accessory 13~18), and install the throttle adaptor according to the correct angle of the bike.

Figure 3 (Right Hand Grip)



4. Insert throttle adaptor as well as grip to right hand handlebar.

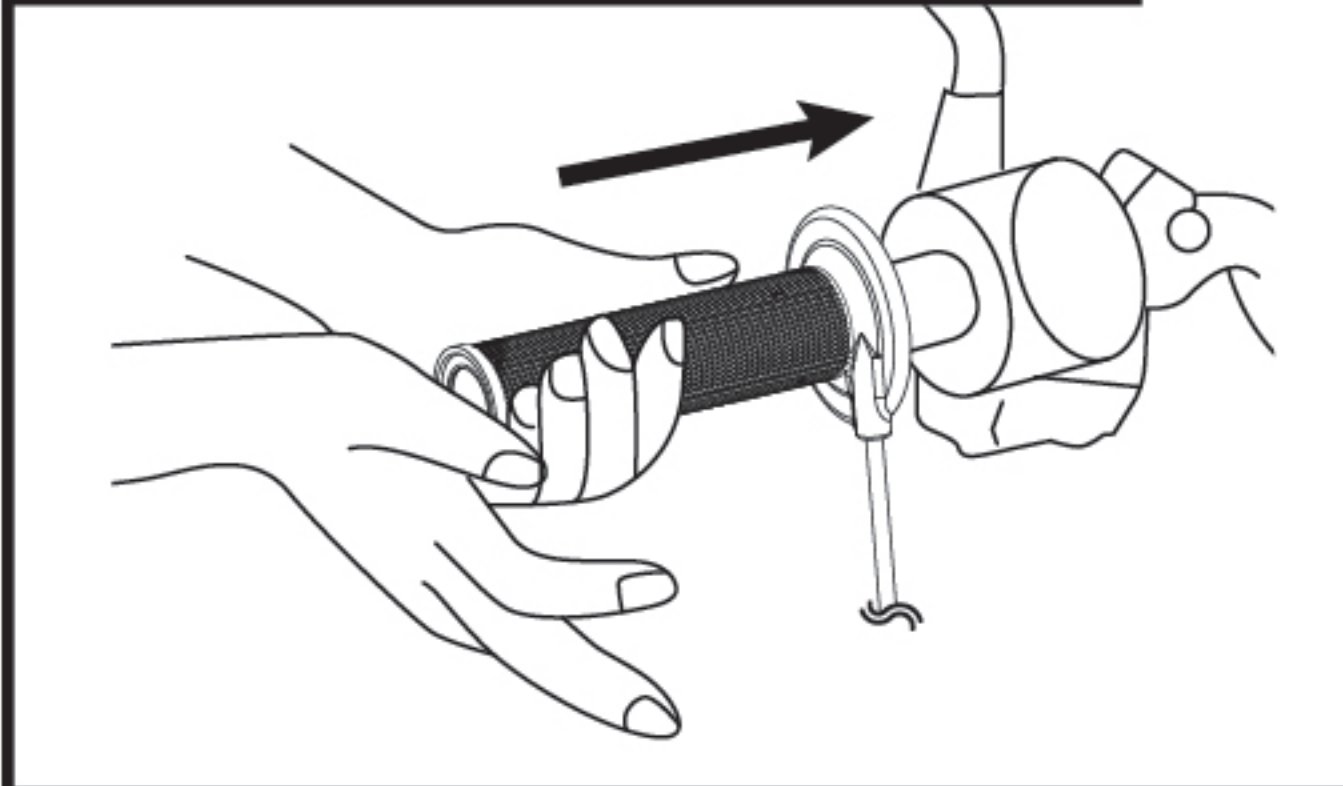
Figure 4 (Right Hand Grip)



**CAUTION!**  
When the throttle has too much space left, you can use the spacer (Accessory 12) to adjust the fitment.

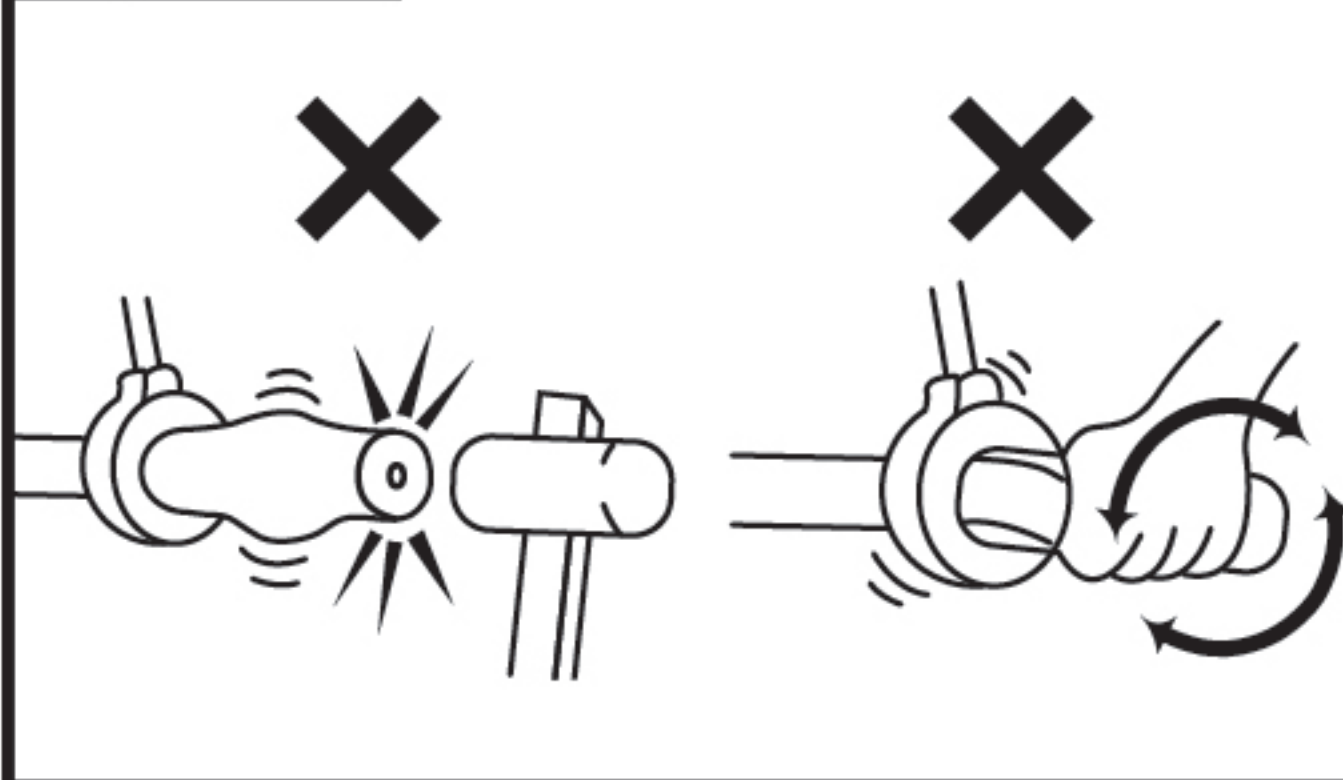
Use Allen key to tighten grips to handlebars.

Figure 5 (Left Hand Grip)



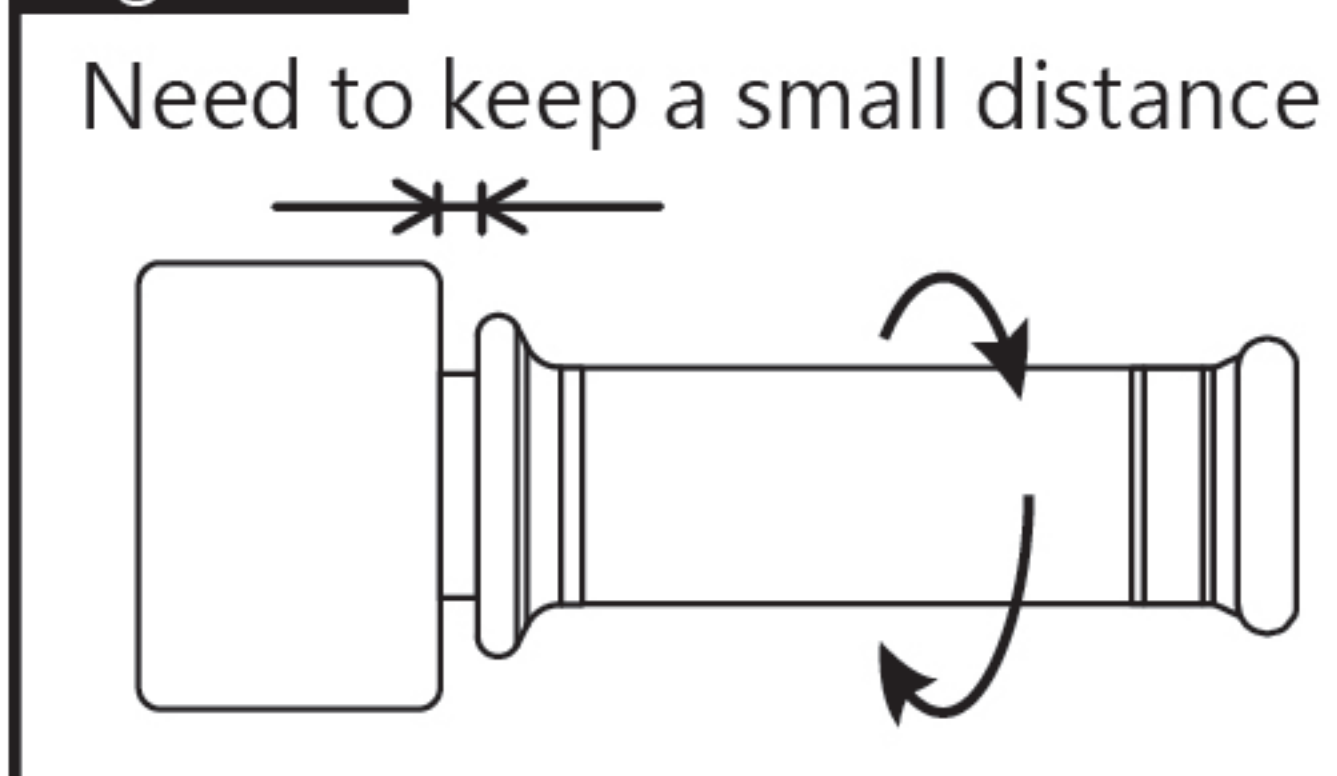
5. Please reverse the disassemble order to install the grip back on.  
Insert left hand grip onto left hand handlebar.

Figure 6



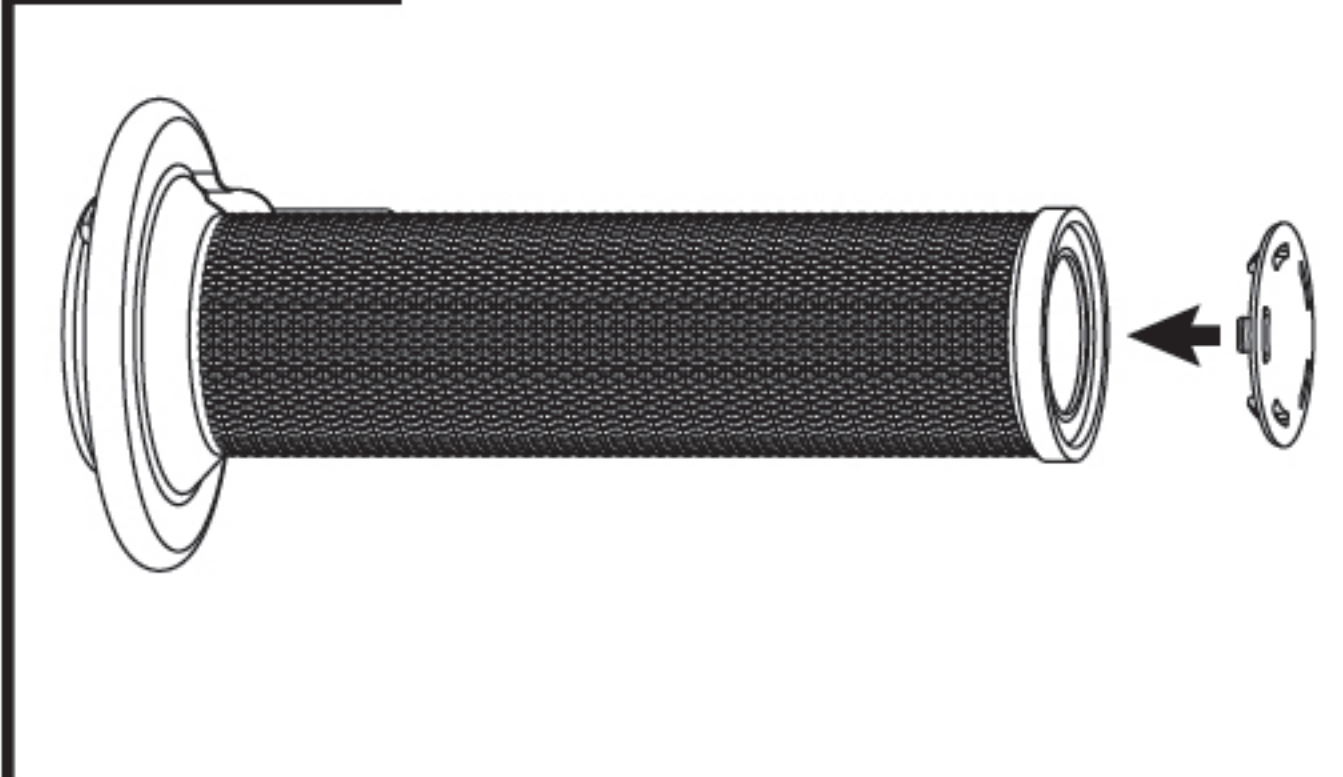
**CAUTION!**  
To install, do not use a tool to knock the grip on. Do not twist the grip by hand or with a tool. By doing so, this will break or damage the wires inside the handlebar.

Figure 7



**CAUTION!**  
To install the heated grip onto the throttle sleeve, the throttle must maintain a small distance with a surplus distance for wiring; You must test them by rotating back and forth to make sure they can twist.

Figure 8



6. Install the end cap on the heated grips.

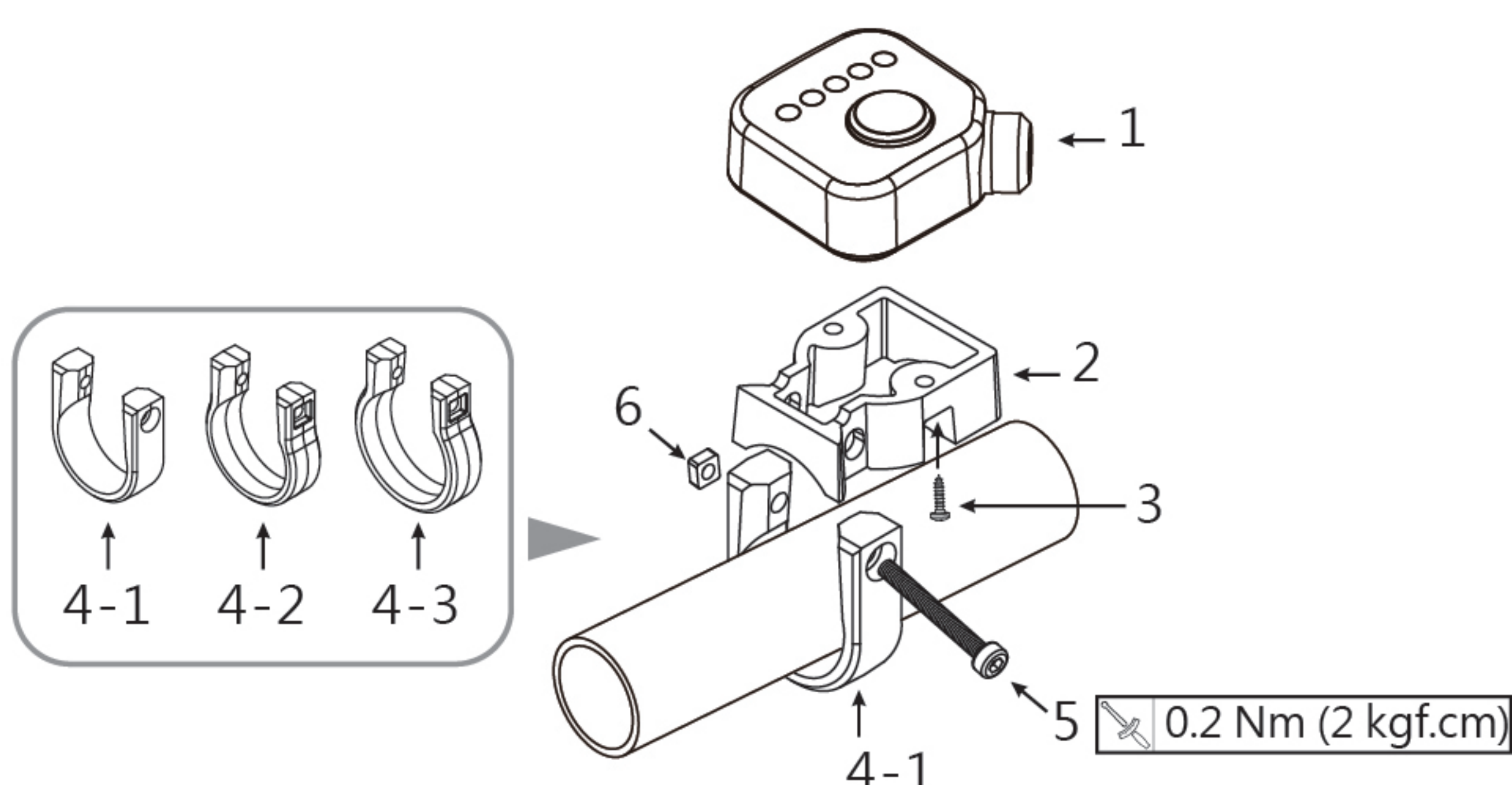
## 3-2 Control box installation instructions

### Installation steps

1. Controller (Accessory 2)
2. Locking Mount (Accessory 7)
3. M2X8 screw (Accessory 8)
- 4-1. Lower Clamp (Accessory 4)
- 4-2. Lower Clamp 1" (Accessory 5)
- 4-3. Lower Clamp 1 1/8" (Accessory 6)
5. M3XP0.5X25L screw (Accessory 9)
6. M3 nut (Accessory 10)

Please choose the suitable clamp according to your handlebar size.

0.2 Nm (2 kgf.cm)





## 5 Troubleshooting

The following situations do not necessarily indicate malfunction of the product. Check the following points, before contacting us.

Trouble	Check item	Trouble	Check item
LED indication does not activate.	<ul style="list-style-type: none"><li>● Power supply wire disconnected. → Check if power supply wire is broken or disconnected.</li><li>→ Check if positive and negative poles are properly connected.</li><li>● May be due to improper set up. → Make sure and double check if setting is under the idle mode.</li></ul>	Grips are not heating up.	<ul style="list-style-type: none"><li>● May be due to the battery. → Make sure and double check if setting is under the idle mode.</li><li>● May be due to lack of power supply. → Check if power wire and fuse are broken or disconnected.</li><li>→ Please check if positive pole and negative pole are well connected.</li><li>● May be due by improper set up. → Confirm function set up is correct.</li></ul>

※If the problems still can't be solved, please contact our technical department for assistance.