



# INSTRUCTION



● Thank you for purchasing KOSO mini thermometer, please read the instruction thoroughly before installing.

## Notice

1. The LCD meter is apply for **CR 2032 (LCD display), DC 12V (Back light)**.
2. For installation, please follow the steps described in manual. Any damage caused by wrong installation shall be imputed to the users.
3. To avoid the short circuit, please don't pull the wire when installing. don't break or modify the wire terminal.
4. Do not disassemble or change any parts excluding the manual description.
5. The interior examination or maintenance should be executed by our professionals.

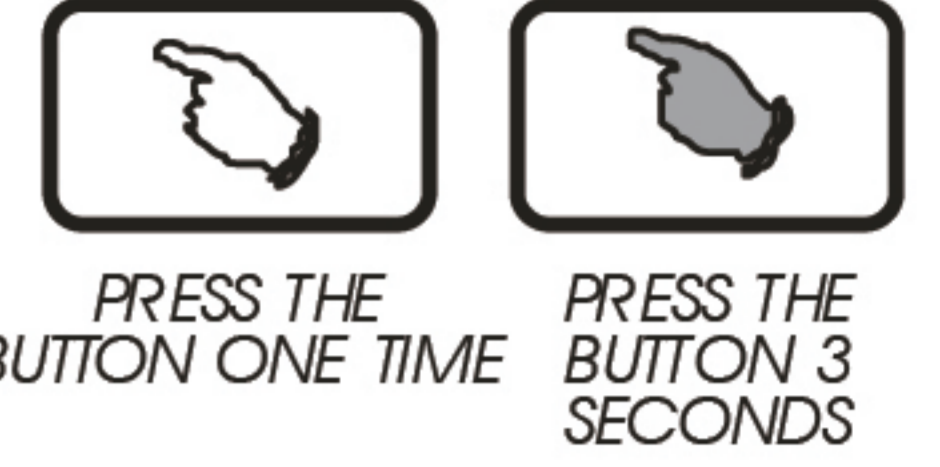
### MARK MEANING:

**NOTE** You could get the installation details from the information behind the mark.

▲ Some processes must be followed to avoid the affection caused by wrong installation.

▲ **WARNING!** Some processes must be followed to avoid damages to yourself or the public.

▲ **CAUTION!** Some processes must be followed to avoid the damage to the vehicle.

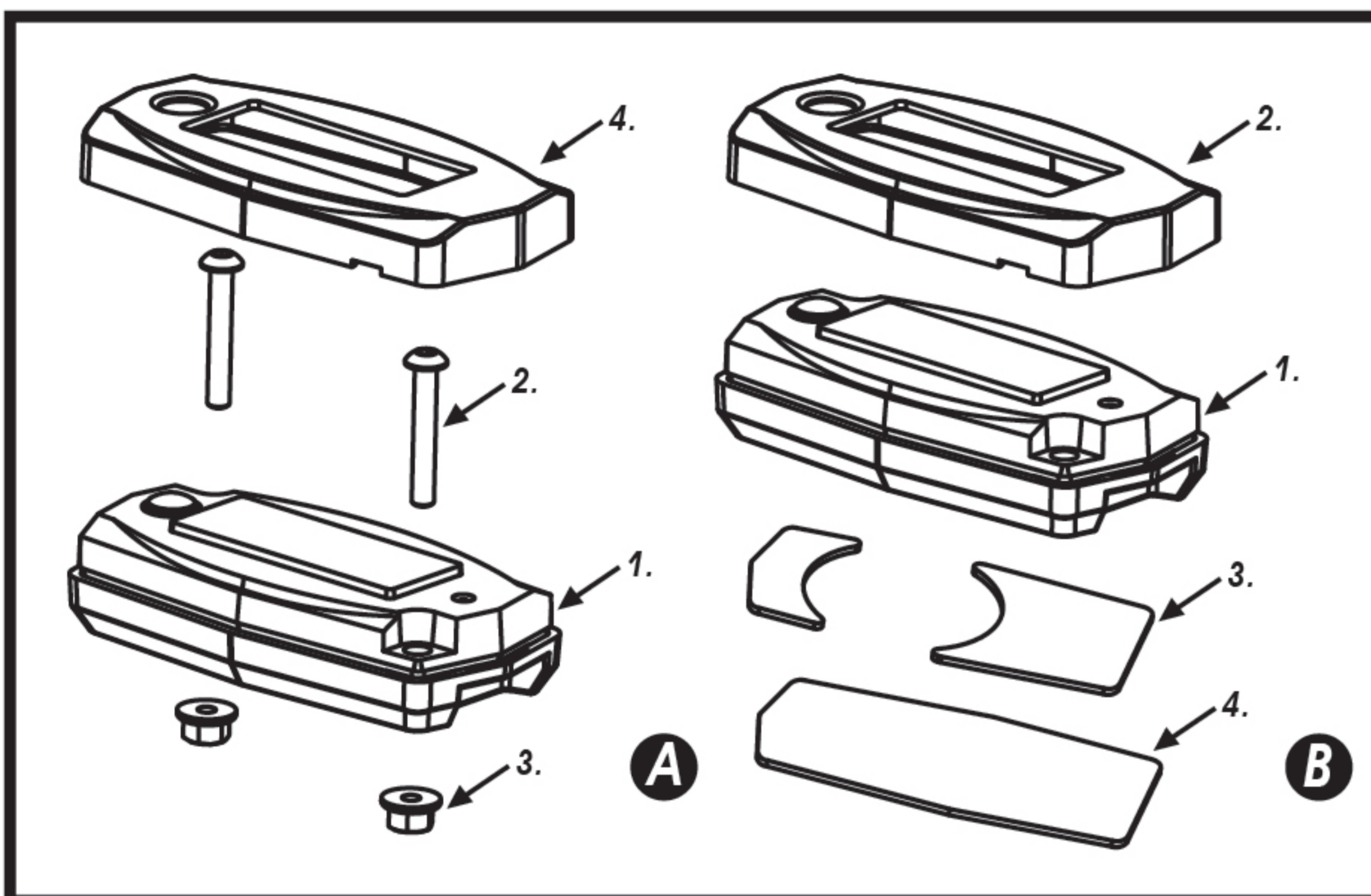


## 1 Accessory

<b>1</b> LCD meter X1	<b>2</b> Meter Cover X1	<b>3</b> Mid-way connect X2	<b>4</b> M3 x L20 HEX socket set screw x2	<b>5</b> M3 x P0.5 nut X2
<b>6</b> Battery X1	<b>7</b> Velcro X 1set	<b>8</b> Temp sensor wire set X2	<b>9</b> PT 1/8water temp sensor X 2	

**NOTE** Please contact the local distributor if the items you open are not the same, with the above-listed one.

## 2-1 Installation instructions



### Follow those steps when installing.

- A**
1. LCD meter (Accessory 1)
  2. HEX socket set screw (Accessory 4)
  3. Nut (Accessory 5)
  4. Meter Cover (Accessory 2)

- B**
1. LCD meter (Accessory 1)
  2. Meter Cover (Accessory 2)
  3. Velcro-Male (Accessory 7)
  4. Velcro-Female (Accessory 7)

**NOTE** Please choose either Method A or B according to your need to install.

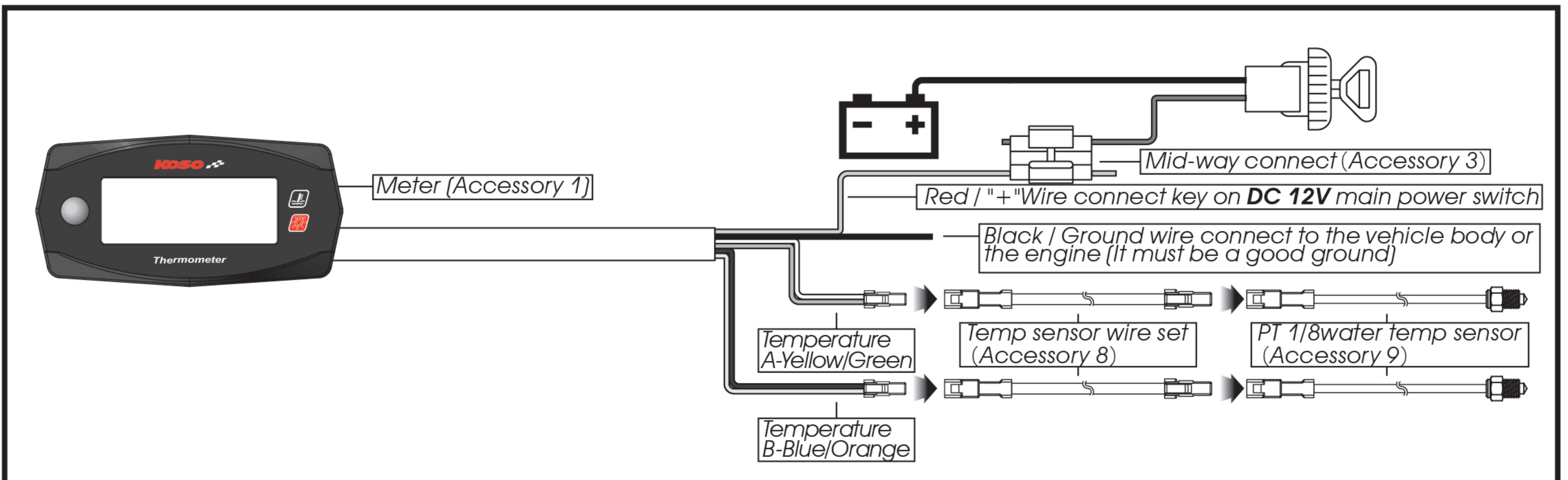
## 2-2 Battery installation instructions

**▲** Please change the battery when the meter is off!

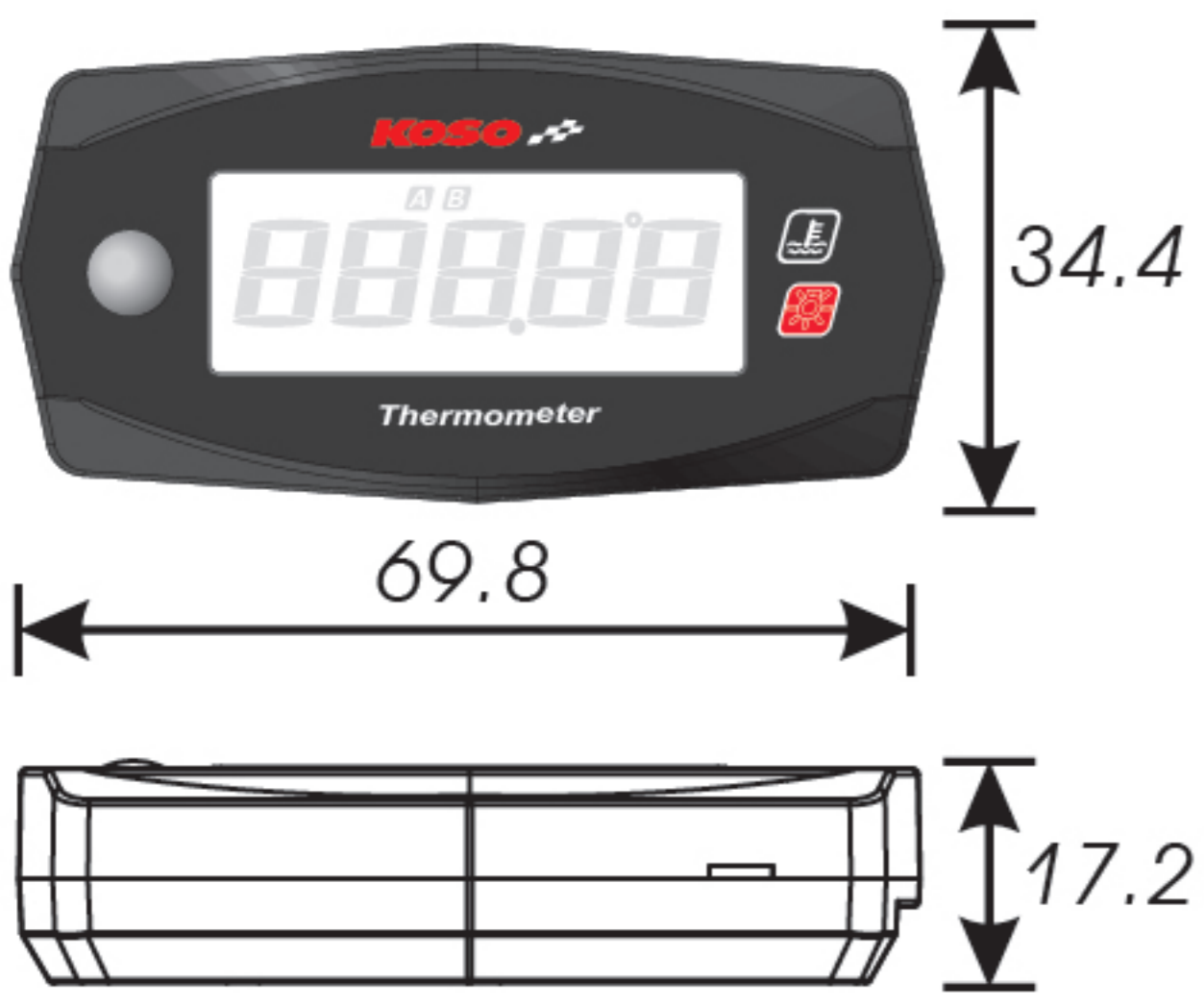
**NOTE** Please follow the arrow direction to press before remove the battery.

**NOTE** If directly connect to the DC 12V power supply, please remove the CR 2032 battery inside the meter.

## 2-3 Wiring installation instructions



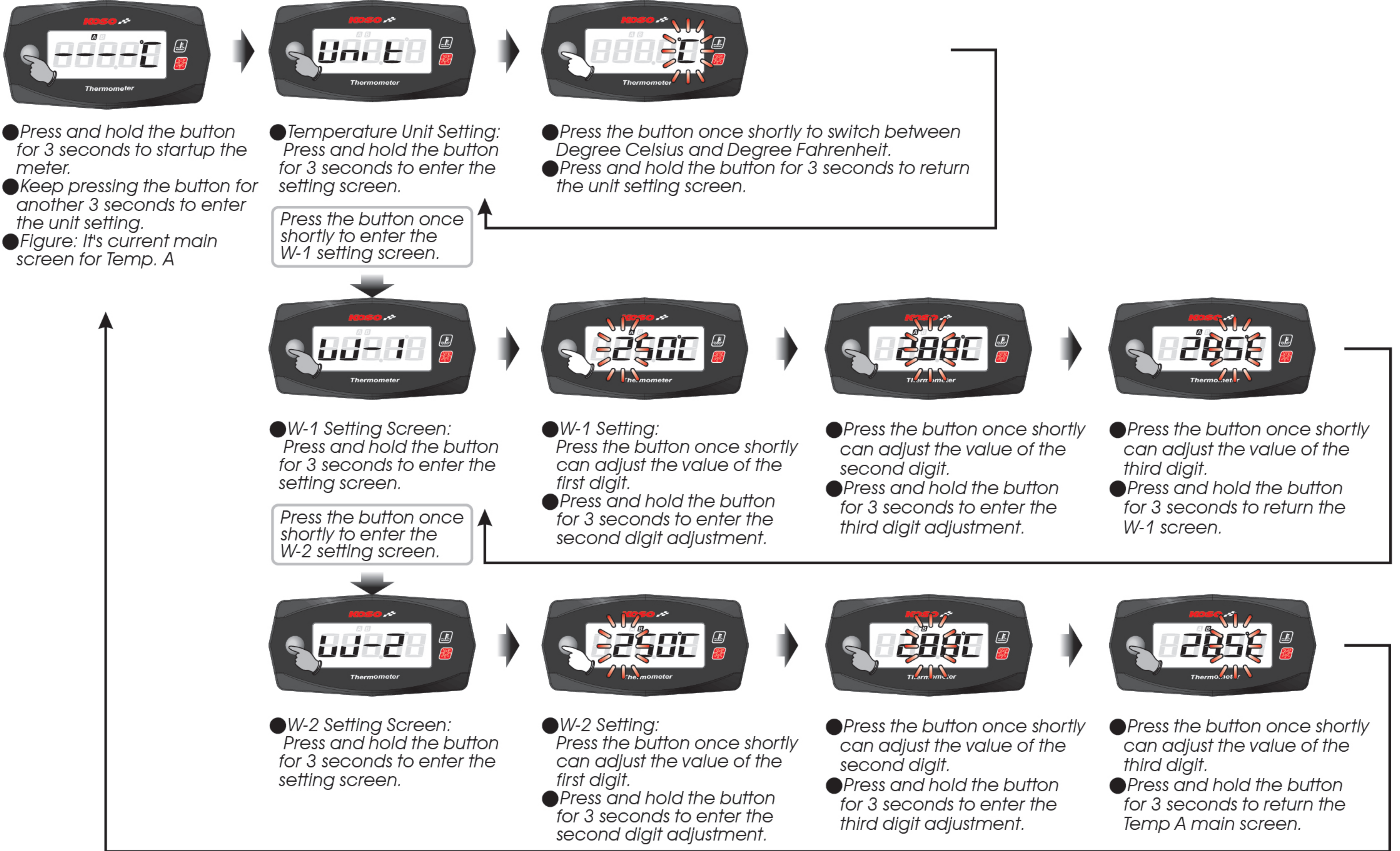
### 3 Basic function instruction



● Thermometer A,B	Display range: -25°C~250°C (-13°F~482 °F) Display unit: 0.1°C (°F)
● Temperature Warning	Range: Settable temperature warning range. Display will flash when the temperature is higher than (or equals to) the setting value.
● Battery type	<b>CR 2032</b>
● Battery life time	About 230 H (when battery volume below 250 mAh)
● Effective temperature range	-10~60°C
● Meter standard	JIS D 0203
● Meter size	W69.8 X L34.4 X H17.2 mm
● Meter weight	Around 47.6g

**NOTE** Design and specifications are subject to change without notice!

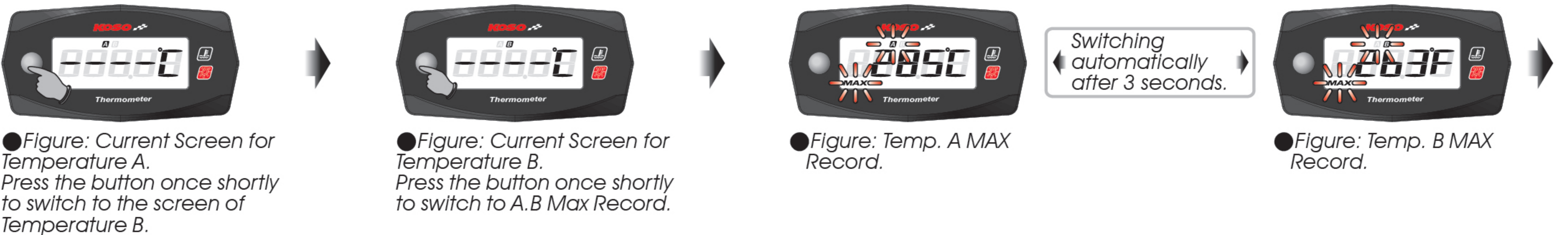
### 4-1 Temperature Unit and Warning Range Setting Instruction



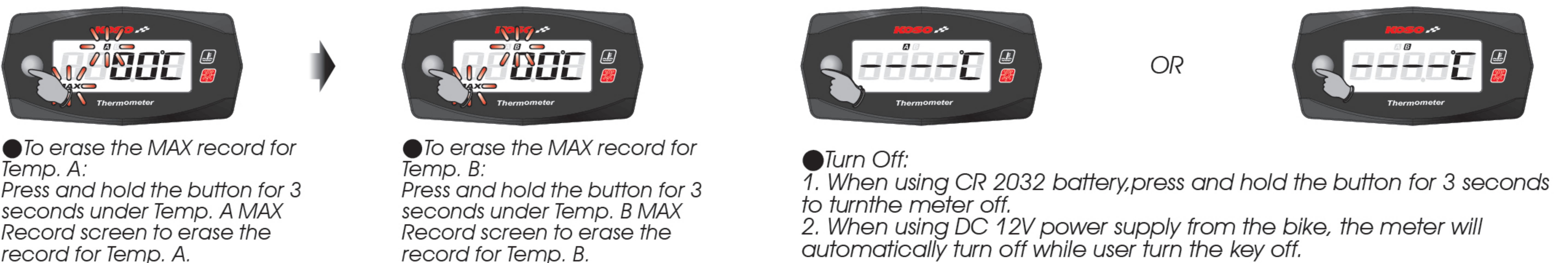
**WARNING!** Please don't check the record during riding to avoid the accident.

**NOTE** W-1 represent the Temperature Warning Range A and W-2 represent the warning range B.

### 4-2 Instruction for Main Screen



### 4-3 Battery installation instructions



### 5 Trouble shooting

The following situation do not indicate malfunction of the meter. Please check the following before taking it in for repair.

Trouble-1	Check item	Trouble-2	Check item
The meter shows wrong information.	<ul style="list-style-type: none"> <li>● Maybe the problem is caused by the insufficient power. → Please change the inner battery.</li> <li>● Maybe the problem is caused by wrong battery installation. → Please check is the battery direction is correct.</li> </ul>	Under the Key Off status, the meter screen doesn't go off.	<ul style="list-style-type: none"> <li>● It's highli possible that the CR 2032 battery hasn't been removed. → Please press and hold the button for 3 seconds, and confirm whether the meter is turned off or not.</li> </ul>

※ If the problem couldn't be solved after above checking, please contact the local dealer or KOSO directly.